



UNIFORCE DRILLING

ISSUE 12-1



A Customer-Driven Global Company

Established in Europe in 1998, Auger Torque has created a new standard in the Earth Drill and Trencher Attachment market by putting you, the customer, at the centre of everything we do.

In 2005, after surveying the market carefully, we released a new range of innovative products, designed to provide unrivalled reliability and cost effective operation.

Auger Torque is proud to have become part of the Kinshofer Group of companies in 2015. With the backing of the German attachments giant Auger Torque has since enjoyed even greater growth in all areas of its business operations.

Auger Torque's six manufacturing bases around the globe are busy satisfying the ever-growing demand for high-quality products in over seventy countries and on all seven continents.

Auger Torque - A manufacturing company with Global distribution and dealer networks.



Auger Torque Europe



Auger Torque China



Auger Torque Australia

INDEX

EARTH DRILLS 8

AUGERS & WEAR PARTS 26

TCH AUGER RANGE 36

TRUCK CRANES & ROPE WIND HITCH 38

XHT SCREW PILE TORQUE HEADS 40

ALIGNMENT MONITOR 44

TORQUE MONITOR 45

TRENCHERS 46

SWEEPER BROOMS 52

HEDGE TRIMMERS 53

PALLET FORKS 54

MIXER BOWLS 55

STUMP PLANERS 56



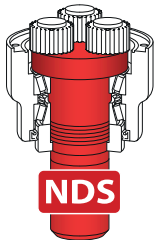
Innovation and Special Features



Robust Construction

DURABILITY

- Manufactured from high grade materials and precision engineered components
- Designed to withstand extreme working conditions
- High grade synthetic gear oil used for extra protection and long service life



Non-Dislodgement Shaft

SECURITY

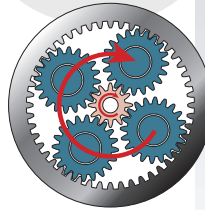
- Unique design
- Single piece drive shaft
- Lifetime warranty against shaft dislodgement



Pilots

TOUGHNESS & ACCURACY

- Earth, Tungsten, Extra Dig and Rock Pilots
- Tough forged construction
- Easy fitting



Planetary Gearbox

POWER

- Designed, manufactured and assembled by Auger Torque
- Torque amplified
- High efficiency
- Extreme durability



Shallow Pitch Flights

EFFICIENCY

- Piling industry technology
- Holds earth on flights on removal
- Most efficient ratio between quantity of earth removed and speed of operation



Pilot Extensions

ACCURACY

- Allows an auger to hold its axis accurately in tough ground conditions
- Improves performance on sloping ground
- Simple fitting



Telescopic Extensions

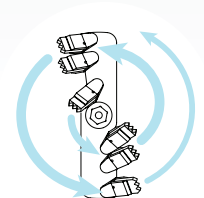
ADAPTABILITY

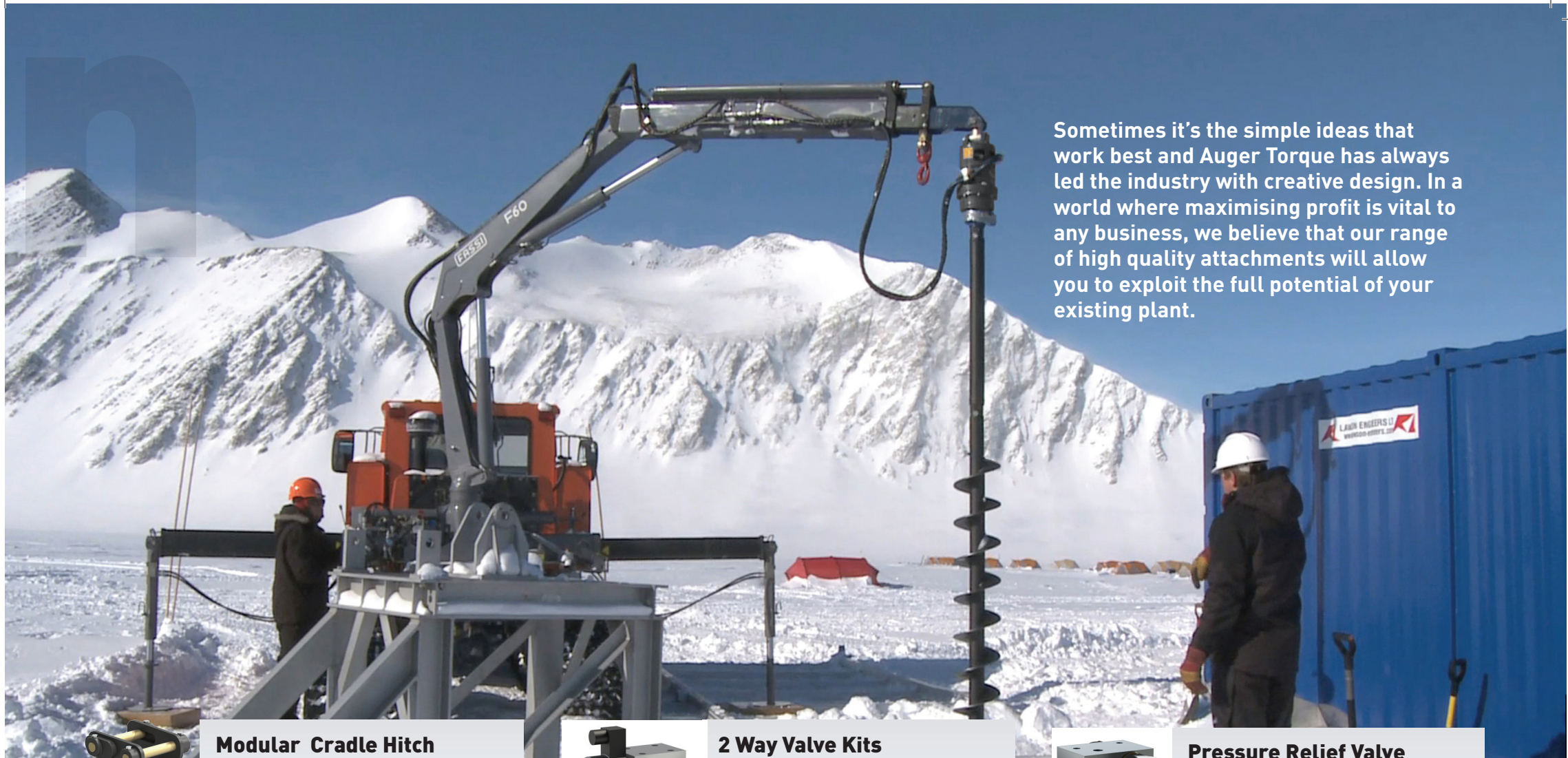
- Improves efficiency for deep hole drilling
- Innovative design significantly reduces swap-over time
- Easy adjustment to 3 heights
- Available for S5, S6 and PA augers

Constant Spiral Cut

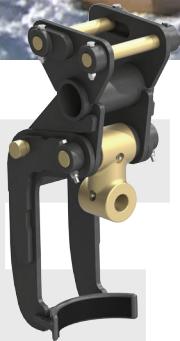
IMPROVED PRODUCTIVITY

- Fresh cut every revolution
- Tooth holders angled to direct spoil onto auger flights efficiently
- Spoil broken up thoroughly
- Avoids clogging





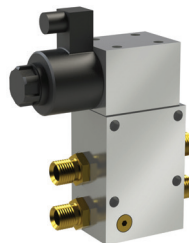
Sometimes it's the simple ideas that work best and Auger Torque has always led the industry with creative design. In a world where maximising profit is vital to any business, we believe that our range of high quality attachments will allow you to exploit the full potential of your existing plant.



Modular Cradle Hitch

INGENUITY

- 2 hitches in 1
- Unique design converts a Double Pin Hitch into a Double Pin Cradle Hitch
- Stabilises the Earth Drill in transit



2 Way Valve Kits

FLEXIBILITY

- Converts single acting hammer circuit into a 2 way auxiliary flow circuit



Pressure Relief Valve

SAFETY

- Helps prevent overloading of the hydraulic circuit
- Protects the hydraulic motor

Designed for Your Environment

EARTH DRILLS

Applications include:

- Fencing
- Landscaping
- Tree planting
- Well boring
- Foundation piles
- Screw pile installations
- Ground source heat pumps
- Pole and mast installations
- Road signage
- Sound barriers
- Exploration and research

TRENCHERS

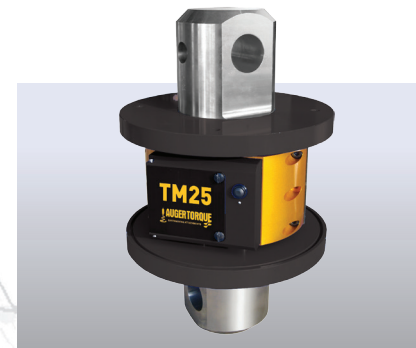
Applications include:

- Drainage
- Irrigation
- Ground source heat pumps
- Fibre optic installations
- Electric cable installations
- Narrow strip foundations
- Gas and water piping



Our products incorporate many development features. The trench cleaner on our Trencher Attachments ensures a good clean cut with no residual spoil.

At Auger Torque we realise that one of the best ways to continually improve our extensive range of quality attachments is to not only listen to customer feedback but to put practical ideas into production. This policy of direct customer involvement has given us the reputation of being the specialists in the trenching and auger drive industry world-wide.



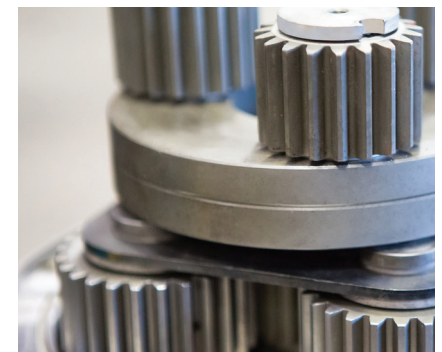
New products featuring the latest technology ensure that we are able to maximise your efficiency.



Quality is at the forefront of our philosophy.



Our R&D Test Facility puts our attachments through rigorous test procedures that exceed real-life demands.



All of our gearboxes use precision engineered components.



KINSHOFER

SHOCK LOCK™

Tooth Locking System

Recognised as the ONLY tooth locking system that works!

Are you tired of losing your teeth down the hole?

With our patented **Shock Lock™** Tooth Locking System this is now a thing of the past. Using the **Shock Lock™** pin and rubber insert in our unique **Shock Lock™** tooth holders ensures your Auger teeth are safely locked in place and protected against shock fractures.

Replacing worn teeth is a breeze with this system, simply knock out the old pin with a standard hole punch and the tooth will slide out of the pocket with ease.

Acclaimed as the best system on the market you will never need to worry about fitting spare teeth due to loss again.

International Patents:

British Patent: 2404935

European Patent: 1507061

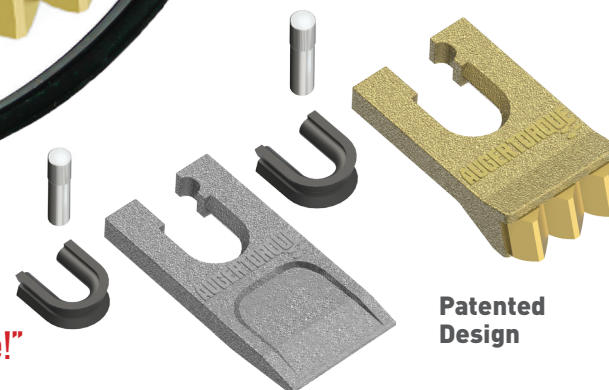
German Patent: 60 2004 009 250-9

Australian Patent: 2004203825

Canadian Patent: 2478443

US Patent: 7383901

**"Don't leave
your teeth
down the hole!"**



EARTH DRILLS

Features of our Earth Drills

FORGED HOOD EARS

Standard with all Earth Drills in areas that we know will take a lot of strain. All hood pins are locked for extra safety making it impossible for the hood to detach from your hitch.

HOSE & COUPLER OPTIONS

All Earth Drills come standard with high quality hoses and couplers (excludes larger units).

HIGH QUALITY HYDRAULIC MOTORS

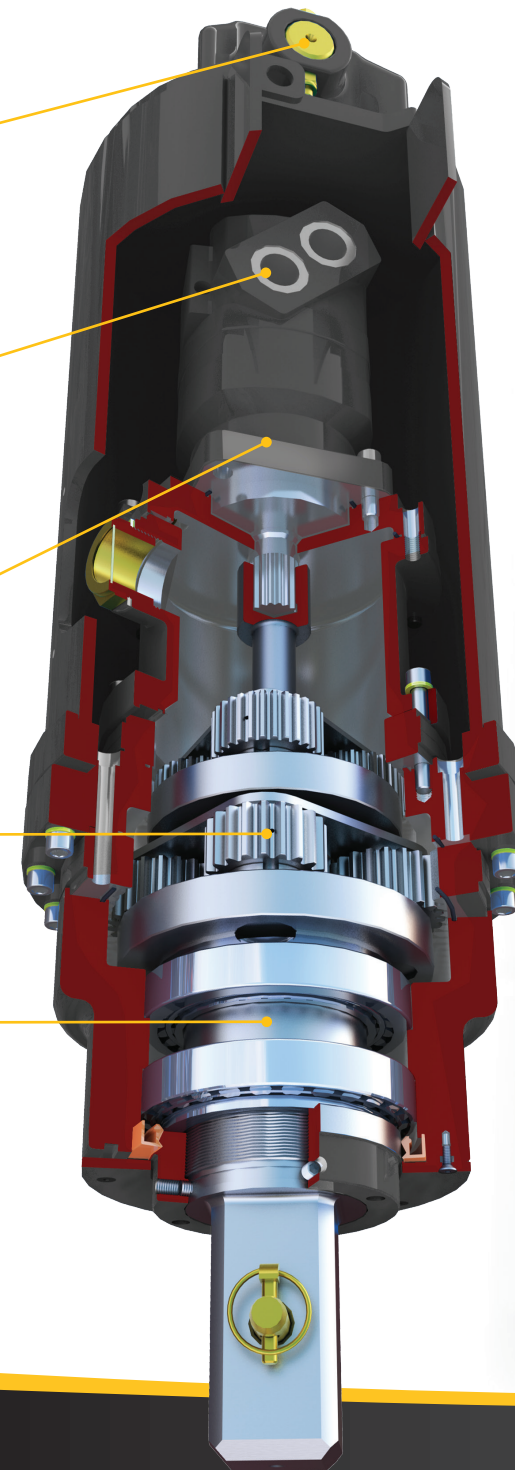
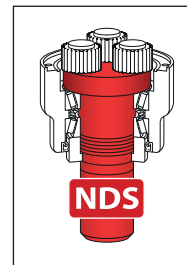
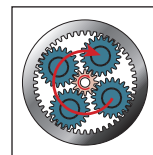
Auger Torque's huge buying power means we work closely with high quality suppliers to develop the most reliable attachments available on the market today.

EPICYCLIC GEARBOX

Torque is amplified by using the unique Auger Torque planetary gearbox. This system allows the motors output torque to be multiplied with extreme efficiency as well as ensuring the durability and reliability you need.

NON-DISLODGE- MENT SHAFT

Unique to Auger Torque, the Non-Dislodgement Shaft is a single piece drive shaft assembled top down and locked into the Earth Drill housing. This design guarantees that the shaft will never fall out, making for a safer work environment, not only for the operator but also any surrounding workers, a **MUST-HAVE FEATURE** for any safety conscious company.



**WATCH
VIDEO**





X1100-13 Earth Drill

MINI EXCAVATORS 2,200 - 4,400 LB

S4 AUGERS 4 in. - 16 in. Dia

Torque Range: 377 - 1,103 ft-lb
Oil Pressure Range: 1,015 - 2,973 psi

Oil Flow Range: 5 - 13 gpm
Speed Range: 41 - 107 rpm

Unit Height: 23 in.

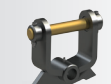
Unit Diameter: 8 in.

Unit Weight: 98 lbs

Hitch Options: Single Pin Hitch
Double Pin Hitch
Cradle Hitch

Output Shaft Std: 2 in. Hex

Output Shaft Opt: 2.56 in. Round
2.25 in. Square



Double Pin
Cradle Hitch



2.56 in.
Round



2 in. Hex



2.25 in.
Square

GUIDE TO DRILLING PERFORMANCE*

AUGER DIA	DRILLING DEPTH IN FEET**		
	SOFT	MEDIUM	HARD
4 in	7 ft	6 ft	5 ft
6 in	7 ft	6 ft	5 ft
8 in	6 ft	5 ft	5 ft
9 in	6 ft	5 ft	5 ft
10 in	5 ft	5 ft	4 ft
12 in	5 ft	5 ft	4 ft
14 in	5 ft	5 ft	4 ft
15 in	5 ft	5 ft	4 ft
16 in	4 ft	4 ft	3 ft



X1600-15 Earth Drill

MINI EXCAVATORS 2,200 - 5,500 LB

S4 AUGERS 4 in. - 18 in. Dia

Torque Range: 471 - 1,615 ft-lb
Oil Pressure Range: 1,015 - 3,481 psi

Oil Flow Range: 7 - 15 gpm
Speed Range: 43 - 99 rpm

Unit Height: 23 in.

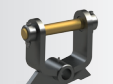
Unit Diameter: 8 in.

Unit Weight: 104 lbs

Hitch Options: Single Pin Hitch
Double Pin Hitch
Cradle Hitch

Output Shaft Std: 2 in. Hex

Output Shaft Opt: 2.56 in. Round
2.25 in. Square



Double Pin
Cradle Hitch



2.56 in.
Round



2 in. Hex



2.25 in.
Square

GUIDE TO DRILLING PERFORMANCE*

AUGER DIA	DRILLING DEPTH IN FEET**		
	SOFT	MEDIUM	HARD
4 in	7 ft	7 ft	6 ft
6 in			
8 in			
9 in			
10 in	↓	↓	↓
12 in	7 ft	7 ft	6 ft
14 in	7 ft	6 ft	5 ft
15 in	6 ft	5 ft	5 ft
16 in	5 ft	5 ft	4 ft
18 in	4 ft	4 ft	3 ft



X2100-17 Earth Drill

MINI EXCAVATORS 3,300 - 6,600 LB

S4 AUGERS 4 in. - 20 in. Dia

Torque Range: 612 - 2,100 ft-lb
Oil Pressure Range: 1,015 - 3,481 psi

Oil Flow Range: 7 - 17 gpm
Speed Range: 36 - 87 rpm

Unit Height: 23 in.

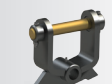
Unit Diameter: 8 in.

Unit Weight: 106 lbs

Hitch Options: Single Pin Hitch
Double Pin Hitch
Cradle Hitch

Output Shaft Std: 2 in. Hex

Output Shaft Opt: 2.56 in. Round
2.25 in. Square



Double Pin
Cradle Hitch



2.56 in.
Round



2 in. Hex



2.25 in.
Square

GUIDE TO DRILLING PERFORMANCE*

AUGER DIA	DRILLING DEPTH IN FEET**		
	SOFT	MEDIUM	HARD
4 in	8 ft	8 ft	7 ft
6 in			
8 in			
9 in			
10 in	↓	↓	↓
12 in	8 ft	8 ft	7 ft
14 in	8 ft	7 ft	6 ft
15 in	7 ft	6 ft	6 ft
16 in	6 ft	6 ft	5 ft
18 in	6 ft	5 ft	5 ft
20 in	5 ft	5 ft	4 ft



2200-20 Earth Drill

MINI EXCAVATORS 4,400 - 8,800 LB

S4 AUGERS 4 in. - 24 in. Dia

Torque Range: 707 - 2,122 ft-lb
Oil Pressure Range: 1,160 - 3,481 psi

Oil Flow Range: 7 - 20 gpm
Speed Range: 36 - 100 rpm

Unit Height: 26 in.

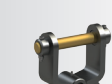
Unit Diameter: 10 in.

Unit Weight: 157 lbs

Hitch Options: Single Pin Hitch
Double Pin Hitch
Cradle Hitch

Output Shaft Std: 2 in. Hex

Output Shaft Opt: 2.56 in. Round
2.25 in. Square



Double Pin
Cradle Hitch



2.56 in.
Round



2 in. Hex



2.25 in.
Square

GUIDE TO DRILLING PERFORMANCE*

AUGER DIA	DRILLING DEPTH IN FEET**		
	SOFT	MEDIUM	HARD
4 in	10 ft	9 ft	8 ft
6 in			
8 in			
9 in			
10 in			
12 in			
14 in			
15 in	↓	↓	↓
16 in	10 ft	9 ft	8 ft
18 in	9 ft	8 ft	7 ft
20 in	8 ft	7 ft	6 ft
22 in	7 ft	6 ft	5 ft
24 in	6 ft	5 ft	5 ft

*These charts have been created as a guide only. Actual performance figures may differ.

** The data shown has been obtained, by Auger Torque, in a controlled environment. Auger Torque cannot guarantee that this environment can be replicated and as such cannot accept liability if these figures cannot be achieved.

***Any data or specification contained within this documentation may be subject to change without prior notification. For further information please contact your authorised Auger Torque distributor.

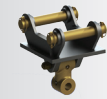
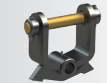


2700-25
Earth Drill

MINI EXCAVATORS 5,500 - 9,900 LB

S4 AUGERS 4 in. - 30 in. Dia

Torque Range: 888 - 2,665 ft-lb
Oil Pressure Range: 1,160 - 3,481 psi
Oil Flow Range: 10 - 25 gpm
Speed Range: 50 - 126 rpm
Unit Height: 26 in.
Unit Diameter: 10 in.
Unit Weight: 161 lbs
Hitch Options: Single Pin Hitch
Double Pin Hitch
Cradle Hitch
Output Shaft Std: 2 in. Hex
Output Shaft Opt: 2.56 in. Round
2.25 in. Square



Double Pin Cradle Hitch



GUIDE TO DRILLING PERFORMANCE*

AUGER DIA	DRILLING DEPTH IN FEET**		
	SOFT	MEDIUM	HARD
4 in	10 ft	9 ft	8 ft
6 in			
8 in			
9 in			
10 in			
12 in			
14 in			
15 in			
16 in			
18 in			
20 in	↓	↓	↓
22 in	10 ft	9 ft	8 ft
24 in	10 ft	9 ft	8 ft
28 in	8 ft	7 ft	6 ft
30 in	6 ft	5 ft	5 ft

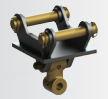


3300-30
Earth Drill

MINI EXCAVATORS 6,600 - 11,000 LB

S4 AUGERS 4 in. - 36 in. Dia

Torque Range: 1,106 - 3,318 ft-lb
Oil Pressure Range: 1,160 - 3,481 psi
Oil Flow Range: 13 - 30 gpm
Speed Range: 42 - 97 rpm
Unit Height: 26 in.
Unit Diameter: 10 in.
Unit Weight: 166 lbs
Hitch Options: Single Pin Hitch
Double Pin Hitch
Cradle Hitch
Output Shaft Std: 2 in. Hex
Output Shaft Opt: 2.56 in. Round
2.25 in. Square



Double Pin Cradle Hitch



GUIDE TO DRILLING PERFORMANCE*

AUGER DIA	DRILLING DEPTH IN FEET**		
	SOFT	MEDIUM	HARD
4 in	13 ft	12 ft	10 ft
6 in			
8 in			
9 in			
10 in			
12 in			
14 in			
15 in			
16 in			
18 in			
20 in			
22 in	↓	↓	↓
24 in	13 ft	12 ft	10 ft
28 in	10 ft	9 ft	8 ft
30 in	8 ft	8 ft	7 ft
32 in	7 ft	6 ft	5 ft
36 in	5 ft	5 ft	4 ft

AUGER SUMMARY

Full technical details of Augers, Extensions and Wear Parts can be found in the Auger section of this brochure.

S4 AUGERS

Auger Torque S4 Augers feature extra long flighted sections of shallow pitch flights. Earth, Tungsten and Extra Dig variations are available.

Available in the following diameters:

4 in.	12 in.	20 in.	32 in.
6 in.	14 in.	22 in.	36 in.
8 in.	15 in.	24 in.	
9 in.	16 in.	28 in.	
10 in.	18 in.	30 in.	

S4 EXTENSIONS

S4 Auger Extensions are available in the following lengths:

2 ft.	4 ft.
-------	-------



SHOCK LOCK™
Tooth Locking System

DON'T LEAVE YOUR TEETH
DOWN THE HOLE!



** Auger lengths stated
include fitted wear parts.



ML1100-13
Earth Drill

MINI LOADERS

S4 AUGERS
4 in. - 16 in. Dia

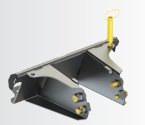
Torque Range: 377 - 1,103 ft-lb
Oil Pressure Range: 1,015 - 2,973 psi

Oil Flow Range: 5 - 13 gpm
Speed Range: 41 - 107 rpm

Unit Height: 16 in.
Unit Width: 8 in.
Unit Weight: 80 lbs

Mounting Frame: 2 Way Swing
4 Way Swing

Output Shaft Std: 2 in. Hex
Output Shaft Opt: 2.56 in. Round
2.25 in. Square



4 Way Swing Frame

2 Way Swing Frame



2.56 in. Round 2 in. Hex 2.25 in. Square

AUGER DIA	DRILLING DEPTH IN FEET**		
	SOFT	MEDIUM	HARD
4 in	7 ft	6 ft	5 ft
6 in	7 ft	6 ft	5 ft
8 in	6 ft	5 ft	5 ft
9 in	6 ft	5 ft	5 ft
10 in	5 ft	5 ft	4 ft
12 in	5 ft	5 ft	4 ft
14 in	5 ft	5 ft	4 ft
15 in	5 ft	5 ft	4 ft
16 in	4 ft	4 ft	3 ft



ML1600-15
Earth Drill

MINI LOADERS

S4 AUGERS
4 in. - 18 in. Dia

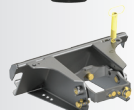
Torque Range: 471 - 1,615 ft-lb
Oil Pressure Range: 1,015 - 3,481 psi

Oil Flow Range: 7 - 15 gpm
Speed Range: 43 - 99 rpm

Unit Height: 18 in.
Unit Width: 8 in.
Unit Weight: 86 lbs

Mounting Frame: 2 Way Swing
4 Way Swing

Output Shaft Std: 2 in. Hex
Output Shaft Opt: 2.56 in. Round
2.25 in. Square



4 Way Swing Frame

2 Way Swing Frame



2.56 in. Round 2 in. Hex 2.25 in. Square

AUGER DIA	DRILLING DEPTH IN FEET**		
	SOFT	MEDIUM	HARD
4 in	7 ft	7 ft	6 ft
6 in			
8 in			
9 in			
10 in	↓	↓	↓
12 in	7 ft	7 ft	6 ft
14 in	7 ft	6 ft	5 ft
15 in	6 ft	5 ft	5 ft
16 in	5 ft	5 ft	4 ft
18 in	4 ft	4 ft	3 ft



ML2100-17
Earth Drill

MINI LOADERS

S4 AUGERS
4 in. - 20 in. Dia

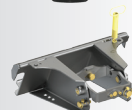
Torque Range: 612 - 2,100 ft-lb
Oil Pressure Range: 1,015 - 3,481 psi

Oil Flow Range: 7 - 17 gpm
Speed Range: 36 - 87 rpm

Unit Height: 18 in.
Unit Width: 8 in.
Unit Weight: 86 lbs

Mounting Frame: 2 Way Swing
4 Way Swing

Output Shaft Std: 2 in. Hex
Output Shaft Opt: 2.56 in. Round
2.25 in. Square



4 Way Swing Frame

2 Way Swing Frame



2.56 in. Round 2 in. Hex 2.25 in. Square

AUGER DIA	DRILLING DEPTH IN FEET**		
	SOFT	MEDIUM	HARD
4 in	8 ft	8 ft	7 ft
6 in			
8 in			
9 in			
10 in	↓	↓	↓
12 in	8 ft	8 ft	7 ft
14 in	8 ft	7 ft	6 ft
15 in	7 ft	6 ft	6 ft
16 in	6 ft	6 ft	5 ft
18 in	6 ft	5 ft	5 ft
20 in	5 ft	5 ft	4 ft



2200-20
Earth Drill

SKIDSTEER LOADERS

LOW FLOW
UP TO 50 HP

S4 AUGERS
4 in. - 24 in. Dia

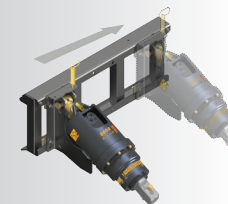
Torque Range: 707 - 2,122 ft-lb
Oil Pressure Range: 1,160 - 3,481 psi

Oil Flow Range: 7 - 20 gpm
Speed Range: 36 - 100 rpm

Unit Height: 26 in.
Unit Diameter: 10 in.
Unit Weight: 157 lbs

Mounting Frame: Fixed Centre Cradle
Side Shift Cradle

Output Shaft Std: 2 in. Hex
Output Shaft Opt: 2.56 in. Round
2.25 in. Square



Side Shift Frame



2.56 in. Round 2 in. Hex 2.25 in. Square

AUGER DIA	DRILLING DEPTH IN FEET**		
	SOFT	MEDIUM	HARD
4 in	10 ft	9 ft	8 ft
6 in			
8 in			
9 in			
10 in			
12 in			
14 in			
15 in	↓	↓	↓
16 in	10 ft	9 ft	8 ft
18 in	9 ft	8 ft	7 ft
20 in	8 ft	7 ft	6 ft
22 in	7 ft	6 ft	5 ft
24 in	6 ft	5 ft	5 ft

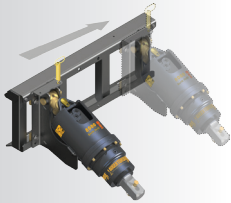


2700-25
Earth Drill

**SKIDSTEER LOADERS
LOW FLOW
UP TO 65 HP**

**S4 AUGERS
4 in. - 30 in. Dia**

Torque Range: 888 - 2,665 ft-lb
Oil Pressure Range: 1,160 - 3,481 psi
Oil Flow Range: 10 - 25 gpm
Speed Range: 50 - 126 rpm
Unit Height: 26 in.
Unit Diameter: 10 in.
Unit Weight: 161 lbs
Mounting Frame: Fixed Centre Cradle
Side Shift Cradle
Output Shaft Std: 2 in. Hex
Output Shaft Opt: 2.56 in. Round
2.25 in. Square



Side Shift Frame



GUIDE TO DRILLING PERFORMANCE*

AUGER DIA	DRILLING DEPTH IN FEET**		
	SOFT	MEDIUM	HARD
4 in	10 ft	9 ft	8 ft
6 in			
8 in			
9 in			
10 in			
12 in			
14 in			
15 in			
16 in			
18 in			
20 in	↓	↓	↓
22 in	10 ft	9 ft	8 ft
24 in	10 ft	9 ft	8 ft
28 in	8 ft	7 ft	6 ft
30 in	6 ft	5 ft	5 ft

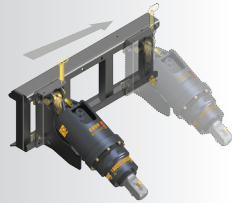


3300-30
Earth Drill

**SKIDSTEER LOADERS
LOW FLOW
UP TO 80 HP**

**S4 AUGERS
4 in. - 36 in. Dia**

Torque Range: 1,106 - 3,318 ft-lb
Oil Pressure Range: 1,160 - 3,481 psi
Oil Flow Range: 13 - 30 gpm
Speed Range: 42 - 97 rpm
Unit Height: 26 in.
Unit Diameter: 10 in.
Unit Weight: 166 lbs
Mounting Frame: Fixed Centre Cradle
Side Shift Cradle
Output Shaft Std: 2 in. Hex
Output Shaft Opt: 2.56 in. Round
2.25 in. Square



Side Shift Frame



GUIDE TO DRILLING PERFORMANCE*

AUGER DIA	DRILLING DEPTH IN FEET**		
	SOFT	MEDIUM	HARD
4 in	13 ft	12 ft	10 ft
6 in			
8 in			
9 in			
10 in			
12 in			
14 in			
15 in			
16 in			
18 in			
20 in			
22 in	↓	↓	↓
24 in	13 ft	12 ft	10 ft
28 in	10 ft	9 ft	8 ft
30 in	8 ft	8 ft	7 ft
32 in	7 ft	6 ft	5 ft
36 in	5 ft	5 ft	4 ft

AUGER SUMMARY

Full technical details of Augers, Extensions and Wear Parts can be found in the Auger section of this brochure.

S4 AUGERS

Auger Torque S4 Augers feature extra long flighted sections of shallow pitch flights. Earth, Tungsten and Extra Dig variations are available.

Available in the following diameters:

4 in.	12 in.	20 in.	32 in.
6 in.	14 in.	22 in.	36 in.
8 in.	15 in.	24 in.	
9 in.	16 in.	28 in.	
10 in.	18 in.	30 in.	

S4 EXTENSIONS

S4 Auger Extensions are available in the following lengths:

2 ft.	4 ft.
-------	-------



SHOCK LOCK™
Tooth Locking System

DON'T LEAVE YOUR TEETH
DOWN THE HOLE!



** Auger lengths stated
include fitted wear parts.

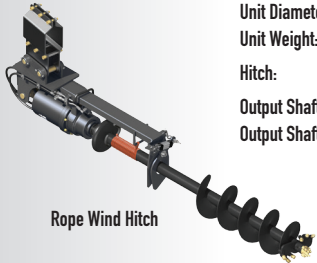


2300-10 Earth Drill

TRUCK CRANES TO
19,800 LB / 39"

S4 AUGERS
4 in. - 24 in. Dia

Torque Range: 707 - 2,298 ft-lb
Oil Pressure Range: 1,160 - 3,771 psi
Oil Flow Range: 1.5 - 10 gpm
Speed Range: 8 - 50 rpm
Unit Height: 26 in.
Unit Diameter: 10 in.
Unit Weight: 161 lbs
Hitch: Rope Wind Hitch
Output Shaft Std: 2 in. Hex
Output Shaft Opt: 2.56 in. Round
2.25 in. Square



Rope Wind Hitch



GUIDE TO DRILLING PERFORMANCE*

AUGER DIA	DRILLING DEPTH IN FEET**		
	SOFT	MEDIUM	HARD
4 in	10 ft	9 ft	8 ft
6 in			
8 in			
9 in			
10 in			
12 in			
14 in			
15 in	↓	↓	↓
16 in	10 ft	9 ft	8 ft
18 in	8 ft	8 ft	7 ft
20 in	7 ft	6 ft	5 ft
22 in	6 ft	5 ft	5 ft
24 in	5 ft	5 ft	4 ft

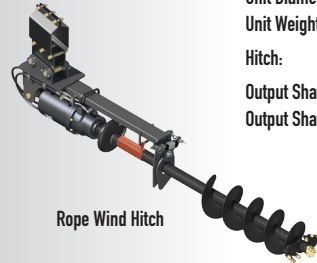


4000-14 Earth Drill

TRUCK CRANES TO
33,000 LB / 39"

S5 AUGERS
6 in. - 32 in. Dia

Torque Range: 1,243 - 4,039 ft-lb
Oil Pressure Range: 1,160 - 3,771 psi
Oil Flow Range: 4 - 14 gpm
Speed Range: 11 - 40 rpm
Unit Height: 31 in.
Unit Diameter: 11 in.
Unit Weight: 238 lbs
Hitch: Rope Wind Hitch
Output Shaft Std: 2.5 in. Hex
Output Shaft Opt: 2.96 in. Square



Rope Wind Hitch



GUIDE TO DRILLING PERFORMANCE*

AUGER DIA	DRILLING DEPTH IN FEET**		
	SOFT	MEDIUM	HARD
6 in	13 ft	12 ft	11 ft
8 in			
9 in			
10 in			
12 in			
14 in			
15 in			
16 in			
18 in			
20 in			
22 in	↓	↓	↓
24 in	13 ft	12 ft	11 ft
26 in	11 ft	10 ft	10 ft
30 in	10 ft	9 ft	8 ft
32 in	8 ft	8 ft	7 ft



5000-14 Earth Drill

TRUCK CRANES
19,800 - 39,600 LB / 39"

S5 AUGERS
6 in. - 40 in. Dia

Torque Range: 1,547 - 5,029 ft-lb
Oil Pressure Range: 1,160 - 3,771 psi
Oil Flow Range: 4 - 14 gpm
Speed Range: 9 - 32 rpm
Unit Height: 31 in.
Unit Diameter: 11 in.
Unit Weight: 243 lbs
Hitch: Rope Wind Hitch
Output Shaft Std: 2.5 in. Hex
Output Shaft Opt: 2.96 in. Square



Rope Wind Hitch



GUIDE TO DRILLING PERFORMANCE*

AUGER DIA	DRILLING DEPTH IN FEET**		
	SOFT	MEDIUM	HARD
6 in	16 ft	15 ft	13 ft
8 in			
9 in			
10 in			
12 in			
14 in			
15 in			
16 in			
18 in	↓	↓	↓
20 in	16 ft	15 ft	13 ft
22 in	13 ft	12 ft	10 ft
24 in	13 ft	12 ft	10 ft
26 in	13 ft	12 ft	10 ft
30 in	11 ft	10 ft	10 ft
32 in	10 ft	9 ft	8 ft
36 in	8 ft	8 ft	7 ft
40 in	7 ft	6 ft	5 ft



*These charts have been created as a guide only. Actual performance figures may differ.
** The data shown has been obtained, by Auger Torque, in a controlled environment. Auger Torque cannot guarantee that this environment can be replicated and as such cannot accept liability if these figures cannot be achieved.
***Any data or specification contained within this documentation may be subject to change without prior notification. For further information please contact your authorised Auger Torque distributor.

AUGER SUMMARY

Full technical details of Augers, Extensions and Wear Parts can be found in the Auger section of this brochure.

S4 AUGERS FOR THE 2300-10

Auger Torque S4 Augers feature extra long flighted sections of shallow pitch flights. **Earth, Tungsten** and **Extra Dig** variations are available.

Available in the following diameters:

4 in.	12 in.	20 in.
6 in.	14 in.	22 in.
8 in.	15 in.	24 in.
9 in.	16 in.	
10 in.	18 in.	

S4 EXTENSIONS

S4 Auger Extensions are available in the following lengths:

2 ft.	4 ft.
-------	-------



SHOCK LOCK™
Tooth Locking System

DON'T LEAVE YOUR TEETH
DOWN THE HOLE!

** Auger lengths stated
include fitted wear parts.



S5 AUGERS FOR THE 4000-14 AND 5000-14

Auger Torque S5 Augers feature extra long flighted sections of shallow pitch flights. **Earth, Tungsten** and **Rock** variations are available.

Available in the following diameters:

6 in.	14 in.	22 in.	36 in.
8 in.	15 in.	24 in.	40 in.
9 in.	16 in.	28 in.	
10 in.	18 in.	30 in.	
12 in.	20 in.	32 in.	

S5 EXTENSIONS

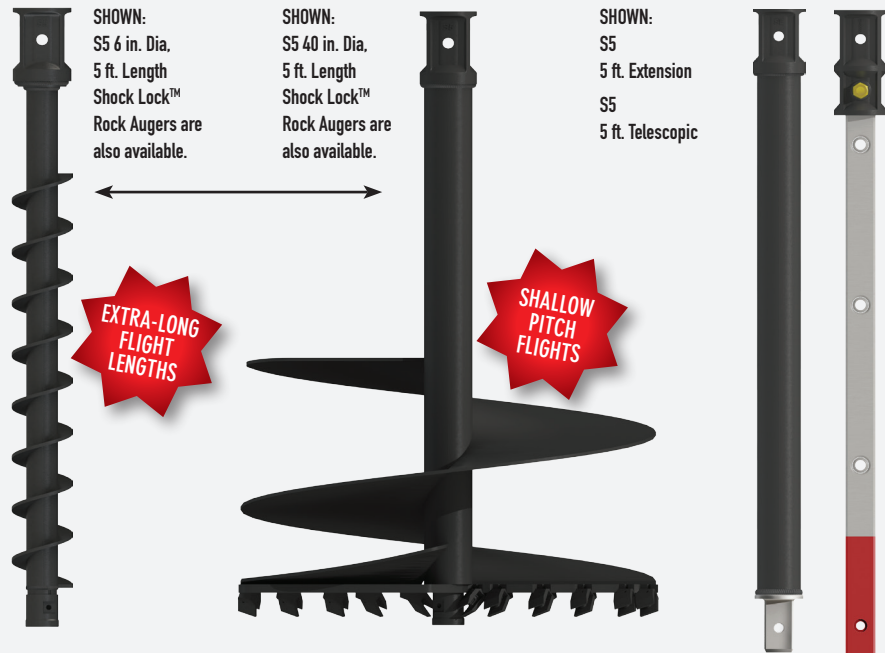
Available in the following lengths:

3 ft. 6 in.	5 ft.
6 ft. 6 in.	

S5 TELESCOPIC

Available in the following lengths:

5 ft.	6 ft. 6 in.
-------	-------------



SHOCK LOCK™
Tooth Locking System

DON'T LEAVE YOUR TEETH
DOWN THE HOLE!



Augers shown feature
Shock Lock™ Toothholders.
Rock Teeth Augers are also
available.



4000-30
Earth Drill

EXCAVATORS
9,900 - 13,200 LB

S5 AUGERS
6 in. - 30 in. Dia

Torque Range: 1,243 - 4,039 ft-lb
Oil Pressure Range: 1,160 - 3,771 psi

Oil Flow Range: 11 - 30 gpm
Speed Range: 30 - 87 rpm

Unit Height: 31 in.
Unit Diameter: 11 in.
Unit Weight: 238 lbs

Hitch Options: Single Pin Hitch
Double Pin Hitch
Cradle Hitch

Optional Extras: 2 Way Valve
Output Shaft Std: 2.5 in. Hex
Output Shaft Opt: 2.96 in. Square



Double Pin Hitch



Cradle Hitch



Single Pin Hitch

GUIDE TO DRILLING PERFORMANCE*

AUGER DIA	DRILLING DEPTH IN FEET**		
	SOFT	MEDIUM	HARD
6 in	13 ft	12 ft	10 ft
8 in			
9 in			
10 in			
12 in			
14 in			
15 in			
16 in			
18 in			
20 in			
22 in	↓	↓	↓
24 in	13 ft	12 ft	10 ft
28 in	11 ft	10 ft	10 ft
30 in	10 ft	9 ft	8 ft



2.96 in. Square
2.5 in. Hex



2 Way Valve
Converts single acting hammer circuit into 2 Way auxiliary flow



5200-35
Earth Drill

EXCAVATORS
11,000 - 15,400 LB

BACKHOES

S5 AUGERS
6 in. - 36 in. Dia

Torque Range: 1,573 - 5,112 ft-lb
Oil Pressure Range: 1,160 - 3,771 psi

Oil Flow Range: 16 - 36 gpm
Speed Range: 36 - 81 rpm

Unit Height: 31 in.
Unit Diameter: 11 in.
Unit Weight: 247 lbs

Hitch Options: Single Pin Hitch
Double Pin Hitch
Cradle Hitch

Optional Extras: 2 Way Valve
Output Shaft Std: 2.5 in. Hex
Output Shaft Opt: 2.96 in. Square



Double Pin Hitch



Cradle Hitch



Single Pin Hitch

GUIDE TO DRILLING PERFORMANCE*

AUGER DIA	DRILLING DEPTH IN FEET**		
	SOFT	MEDIUM	HARD
6 in	16 ft	15 ft	13 ft
8 in			
9 in			
10 in			
12 in			
14 in			
15 in			
16 in			
18 in	↓	↓	↓
20 in	16 ft	15 ft	13 ft
22 in	13 ft	12 ft	10 ft
24 in	13 ft	12 ft	10 ft
28 in	13 ft	12 ft	10 ft
30 in	11 ft	10 ft	10 ft
32 in	10 ft	9 ft	8 ft
36 in	8 ft	8 ft	7 ft



2.96 in. Square
2.5 in. Hex



2 Way Valve
Converts single acting hammer circuit into 2 Way auxiliary flow



6000-40
Earth Drill

EXCAVATORS
13,200 - 17,600 LB

BACKHOES

S5 AUGERS
6 in. - 48 in. Dia

Torque Range: 2,004 - 6,012 ft-lb
Oil Pressure Range: 1,160 - 3,481 psi

Oil Flow Range: 19 - 40 gpm
Speed Range: 33 - 70 rpm

Unit Height: 31 in.
Unit Diameter: 11 in.
Unit Weight: 260 lbs

Hitch Options: Single Pin Hitch
Double Pin Hitch
Cradle Hitch

Optional Extras: 2 Way Valve
Output Shaft Std: 2.5 in. Hex
Output Shaft Opt: 2.96 in. Square



Double Pin Hitch



Cradle Hitch



Single Pin Hitch

GUIDE TO DRILLING PERFORMANCE*

AUGER DIA	DRILLING DEPTH IN FEET**		
	SOFT	MEDIUM	HARD
6 in	20 ft	18 ft	16 ft
8 in			
9 in			
10 in			
12 in			
14 in			
15 in	↓	↓	↓
16 in	20 ft	18 ft	16 ft
18 in	16 ft	15 ft	13 ft
20 in	16 ft	15 ft	13 ft
22 in	16 ft	15 ft	13 ft
24 in	16 ft	15 ft	13 ft
28 in	15 ft	13 ft	12 ft
30 in	13 ft	12 ft	10 ft
32 in	13 ft	12 ft	10 ft
36 in	11 ft	10 ft	10 ft
40 in	11 ft	10 ft	10 ft
48 in	10 ft	9 ft	8 ft



2.96 in. Square
2.5 in. Hex



2 Way Valve
Converts single acting hammer circuit into 2 Way auxiliary flow



AUGER SUMMARY

Full technical details of Augers, Extensions and Wear Parts can be found in the Auger section of this brochure.

S5 AUGERS

Auger Torque S5 Augers feature extra long flighted sections of shallow pitch flights. **Earth, Tungsten and Rock** variations are available.

Available in the following diameters:

6 in.	14 in.	22 in.	36 in.
8 in.	15 in.	24 in.	40 in.
9 in.	16 in.	28 in.	48 in.
10 in.	18 in.	30 in.	
12 in.	20 in.	32 in.	

S5 EXTENSIONS

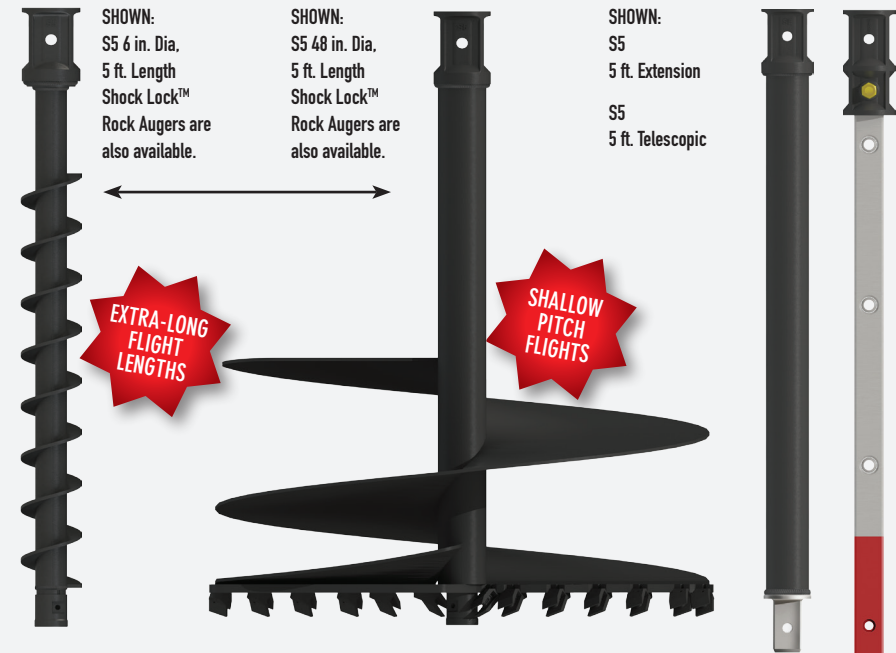
Available in the following lengths:

3 ft. 6 in.	5 ft.
6 ft. 6 in.	

S5 TELESCOPIC

Available in the following lengths:

5 ft.	6 ft. 6 in.
-------	-------------



SHOCK LOCK™
Tooth Locking System

DON'T LEAVE YOUR TEETH
DOWN THE HOLE!



Augers shown feature
Shock Lock™ Toothholders.
Rock Teeth Augers are also
available.



4000-30
Earth Drill

**SKIDSTEER LOADERS
HIGH FLOW
UP TO 100 HP**

**TELEHANDLERS
9,900 - 15,400 LB**

**S5 AUGERS
6 in. - 30 in. Dia**

Torque Range: 1,243 - 4,039 ft-lb
Oil Pressure Range: 1,160 - 3,771 psi

Oil Flow Range: 11 - 30 gpm
Speed Range: 30 - 87 rpm

Unit Height: 31 in.
Unit Diameter: 11 in.
Unit Weight: 238 lbs

Mounting Frame: Fixed Centre Cradle
Side Shift Cradle

Output Shaft Std: 2.5 in. Hex
Output Shaft Opt: 2.96 in. Square



5200-35
Earth Drill

**SKIDSTEER LOADERS
HIGH FLOW
UP TO 36 GPM**

**TELEHANDLERS
11,000 - 15,400 LB**

**S5 AUGERS
6 in. - 36 in. Dia**

Torque Range: 1,573 - 5,112 ft-lb
Oil Pressure Range: 1,160 - 3,771 psi

Oil Flow Range: 16 - 36 gpm
Speed Range: 36 - 81 rpm

Unit Height: 31 in.
Unit Diameter: 11 in.
Unit Weight: 247 lbs

Mounting Frame: Fixed Centre Cradle
Side Shift Cradle

Output Shaft Std: 2.5 in. Hex
Output Shaft Opt: 2.96 in. Square



6000-40
Earth Drill

**SKIDSTEER LOADERS
HIGH FLOW
UP TO 40 GPM**

**S5 AUGERS
6 in. - 48 in. Dia**

Torque Range: 2,004 - 6,012 ft-lb
Oil Pressure Range: 1,160 - 3,481 psi

Oil Flow Range: 19 - 40 gpm
Speed Range: 33 - 70 rpm

Unit Height: 31 in.
Unit Diameter: 11 in.
Unit Weight: 260 lbs

Mounting Frame: Fixed Centre Cradle
Side Shift Cradle

Output Shaft Std: 2.5 in. Hex
Output Shaft Opt: 2.96 in. Square

GUIDE TO DRILLING PERFORMANCE*

AUGER DIA	DRILLING DEPTH IN FEET**		
	SOFT	MEDIUM	HARD
6 in	13 ft	12 ft	10 ft
8 in			
9 in			
10 in			
12 in			
14 in			
15 in			
16 in			
18 in			
20 in			
22 in	↓	↓	↓
24 in	13 ft	12 ft	10 ft
28 in	11 ft	10 ft	10 ft
30 in	10 ft	9 ft	8 ft



GUIDE TO DRILLING PERFORMANCE*

AUGER DIA	DRILLING DEPTH IN FEET**		
	SOFT	MEDIUM	HARD
6 in	16 ft	15 ft	13 ft
8 in			
9 in			
10 in			
12 in			
14 in			
15 in			
16 in			
18 in	↓	↓	↓
20 in	16 ft	15 ft	13 ft
22 in	13 ft	12 ft	10 ft
24 in	13 ft	12 ft	10 ft
28 in	13 ft	12 ft	10 ft
30 in	11 ft	10 ft	10 ft
32 in	10 ft	9 ft	8 ft
36 in	8 ft	8 ft	7 ft



GUIDE TO DRILLING PERFORMANCE*

AUGER DIA	DRILLING DEPTH IN FEET**		
	SOFT	MEDIUM	HARD
6 in	20 ft	18 ft	16 ft
8 in			
9 in			
10 in			
12 in			
14 in			
15 in	↓	↓	↓
16 in	20 ft	18 ft	16 ft
18 in	16 ft	15 ft	13 ft
20 in	16 ft	15 ft	13 ft
22 in	16 ft	15 ft	13 ft
24 in	16 ft	15 ft	13 ft
28 in	15 ft	13 ft	12 ft
30 in	13 ft	12 ft	10 ft
32 in	13 ft	12 ft	10 ft
36 in	11 ft	10 ft	10 ft
40 in	11 ft	10 ft	10 ft
48 in	10 ft	9 ft	8 ft





AUGER SUMMARY

Full technical details of Augers, Extensions and Wear Parts can be found in the Auger section of this brochure.

S5 AUGERS

Auger Torque S5 Augers feature extra long flighted sections of shallow pitch flights. **Earth, Tungsten and Rock** variations are available.

Available in the following diameters:

6 in.	14 in.	22 in.	36 in.
8 in.	15 in.	24 in.	40 in.
9 in.	16 in.	28 in.	48 in.
10 in.	18 in.	30 in.	
12 in.	20 in.	32 in.	

S5 EXTENSIONS

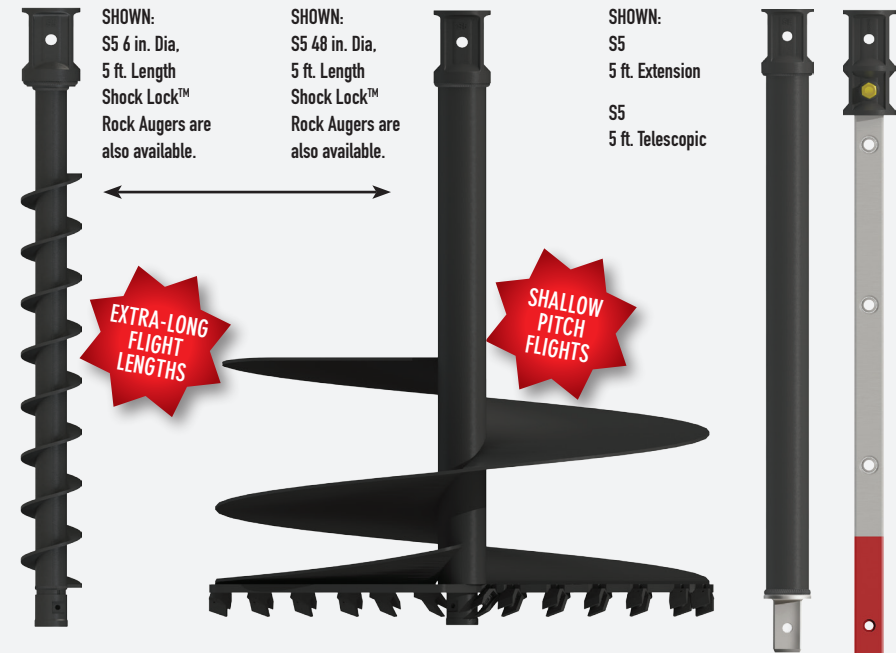
Available in the following lengths:

3 ft. 6 in.	5 ft.
6 ft. 6 in.	

S5 TELESCOPIC

Available in the following lengths:

5 ft.	6 ft. 6 in.
-------	-------------



SHOCK LOCK™
Tooth Locking System

DON'T LEAVE YOUR TEETH
DOWN THE HOLE!



UNIQUE

Augers shown feature Shock Lock™ Toothholders. Rock Teeth Augers are also available.



8000-40 Earth Drill

BACKHOES

S6 AUGERS 6 in. - 36 in. Dia

Torque Range: 2,419 - 7,863 ft-lb
Oil Pressure Range: 1,160 - 3,771 psi

Oil Flow Range: 19 - 40 gpm
Speed Range: 27 - 58 rpm

Unit Height: 35 in.
Unit Diameter: 12 in.
Unit Weight: 358 lbs

Hitch Options: Single Pin Hitch
Double Pin Hitch
Cradle Hitch

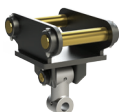
Optional Extras: 2 Way Valve
Output Shaft: 2.96 in. Square



Double Pin
Cradle Hitch



Single Pin Hitch



Double Pin Hitch



2.96 in.
Square



2 Way Valve
Converts single
acting hammer
circuit into 2 Way
auxiliary flow

GUIDE TO DRILLING PERFORMANCE*

AUGER DIA	DRILLING DEPTH IN FEET**		
	SOFT	MEDIUM	HARD
6 in	21 ft	19 ft	17 ft
8 in			
9 in			
10 in			
12 in			
14 in			
15 in	↓	↓	↓
16 in	21 ft	19 ft	17 ft
18 in	20 ft	18 ft	16 ft
20 in	20 ft	18 ft	16 ft
22 in	20 ft	18 ft	16 ft
24 in	20 ft	18 ft	16 ft
28 in	18 ft	16 ft	15 ft
30 in	16 ft	15 ft	13 ft
32 in	16 ft	15 ft	13 ft
36 in	13 ft	12 ft	10 ft



11000-40 Earth Drill

BACKHOES

S6 AUGERS 6 in. - 48 in. Dia

Torque Range: 3,705 - 11,115 ft-lb
Oil Pressure Range: 1,160 - 3,481 psi

Oil Flow Range: 19 - 40 gpm
Speed Range: 18 - 38 rpm

Unit Height: 37 in.
Unit Diameter: 12 in.
Unit Weight: 364 lbs

Hitch Options: Single Pin Hitch
Double Pin Hitch
Cradle Hitch

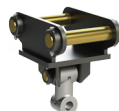
Optional Extras: 2 Way Valve
Output Shaft: 2.96 in. Square



Double Pin
Cradle Hitch



Single Pin Hitch



Double Pin Hitch



2.96 in.
Square



2 Way Valve
Converts single
acting hammer
circuit into 2 Way
auxiliary flow

GUIDE TO DRILLING PERFORMANCE*

AUGER DIA	DRILLING DEPTH IN FEET**		
	SOFT	MEDIUM	HARD
6 in	25 ft	22 ft	20 ft
8 in			
9 in			
10 in			
12 in			
14 in			
15 in	↓	↓	↓
16 in	25 ft	22 ft	20 ft
18 in	23 ft	21 ft	19 ft
20 in	23 ft	21 ft	19 ft
22 in	23 ft	21 ft	19 ft
24 in	23 ft	21 ft	19 ft
28 in	21 ft	19 ft	17 ft
30 in	20 ft	18 ft	16 ft
32 in	20 ft	18 ft	16 ft
36 in	18 ft	16 ft	15 ft
40 in	16 ft	15 ft	13 ft
48 in	15 ft	13 ft	12 ft



11000-45 Earth Drill

EXCAVATORS 22,000 - 33,000 LB

S6 AUGERS 6 in. - 48 in. Dia

Torque Range: 3,705 - 11,115 ft-lb
Oil Pressure Range: 1,160 - 3,481 psi

Oil Flow Range: 21 - 45 gpm
Speed Range: 20 - 43 rpm

Unit Height: 37 in.
Unit Diameter: 12 in.
Unit Weight: 364 lbs

Hitch Options: Single Pin Hitch
Double Pin Hitch
Cradle Hitch

Optional Extras: Pressure Relief Valve
2 Way Valve

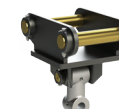
Output Shaft Std: 2.96 in. Square



Double Pin
Cradle Hitch



Single Pin Hitch



Double Pin Hitch



2.96 in. Square



2 Way Valve
Converts single
acting hammer
circuit into 2 Way
auxiliary flow



Bolt On Pressure
Relief Valve

GUIDE TO DRILLING PERFORMANCE*

AUGER DIA	DRILLING DEPTH IN FEET**		
	SOFT	MEDIUM	HARD
6 in	25 ft	22 ft	20 ft
8 in			
9 in			
10 in			
12 in			
14 in			
15 in	↓	↓	↓
16 in	25 ft	22 ft	20 ft
18 in	23 ft	21 ft	19 ft
20 in	23 ft	21 ft	19 ft
22 in	23 ft	21 ft	19 ft
24 in	23 ft	21 ft	19 ft
28 in	21 ft	19 ft	17 ft
30 in	20 ft	18 ft	16 ft
32 in	20 ft	18 ft	16 ft
36 in	18 ft	16 ft	15 ft
40 in	16 ft	15 ft	13 ft
48 in	15 ft	13 ft	12 ft

*These charts have been created as a guide only. Actual performance figures may differ.
** The data shown has been obtained, by Auger Torque, in a controlled environment. Auger Torque cannot guarantee that this environment can be replicated and as such cannot accept liability if these figures cannot be achieved.
***Any data or specification contained within this documentation may be subject to change without prior notification. For further information please contact your authorised Auger Torque distributor.



AUGER SUMMARY

Full technical details of Augers, Extensions and Wear Parts can be found in the Auger section of this brochure.

S6 AUGERS

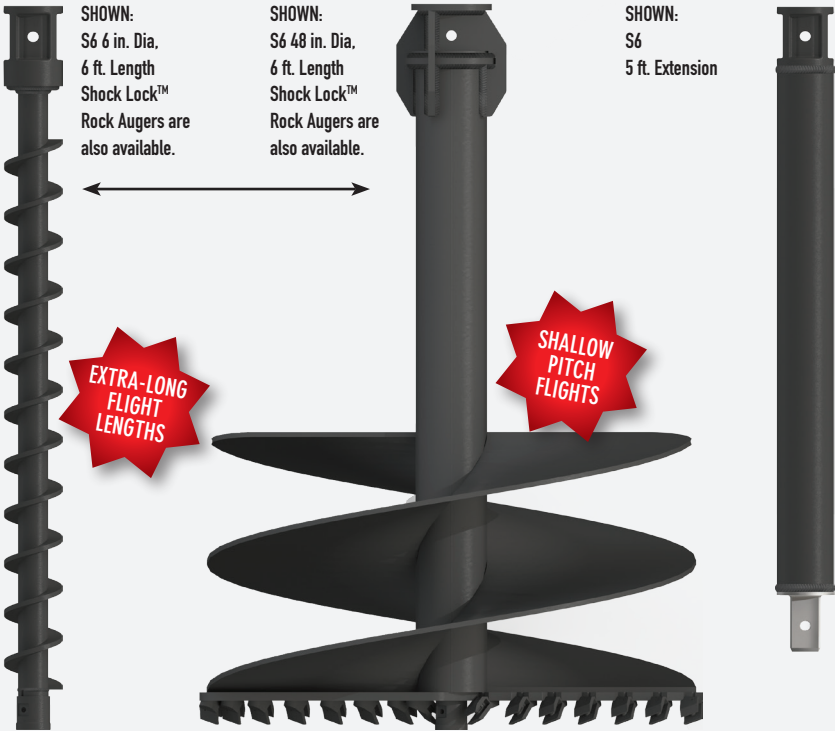
Auger Torque S6 Augers feature extra long flighted sections of shallow pitch flights. **Earth, Tungsten and Rock** variations are available.

Available in the following diameters:

6 in.	12 in.	18 in.	28 in.	40 in.
8 in.	14 in.	20 in.	30 in.	48 in.
9 in.	15 in.	22 in.	32 in.	
10 in.	16 in.	24 in.	36 in.	

S6 EXTENSIONS

Available in the following lengths:
5 ft. 6 ft. 6 in. 8 ft. 10 ft.



SHOCK LOCK™ Tooth Locking System

DON'T LEAVE YOUR TEETH
DOWN THE HOLE!



Augers shown feature
Shock Lock™ Toothholders.
Rock Teeth Augers are also
available.



15000-45
Earth Drill

EXCAVATORS 28,600 - 44,000 LB

S6 AUGERS
6 in. - 48 in. Dia

Torque Range: 9,619 - 14,428 ft-lb
Oil Pressure Range: 2,321 - 3,481 psi

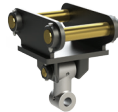
Oil Flow Range: 21 - 45 gpm
Speed Range: 16 - 33 rpm

Unit Height: 45 in.
Unit Diameter: 14 in.
Unit Weight: 591 lbs

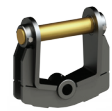
Hitch Options: Single Pin Hitch
Double Pin Hitch
Cradle Hitch

Optional Extras: Pressure Relief Valve
2 Way Valve

Output Shaft: 2.96 in. Square



Double Pin Hitch



Single Pin Hitch



2.96 in.
Square



Double Pin
Cradle Hitch



Bolt On Pressure
Relief Valve



2 Way Valve
Converts single
acting hammer
circuit into 2 Way
auxiliary flow

GUIDE TO DRILLING PERFORMANCE*

AUGER DIA	DRILLING DEPTH IN FEET**		
	SOFT	MEDIUM	HARD
6 in	28 ft	25 ft	23 ft
8 in			
9 in			
10 in			
12 in			
14 in			
15 in	↓	↓	↓
16 in	28 ft	25 ft	23 ft
18 in	26 ft	24 ft	21 ft
20 in	26 ft	24 ft	21 ft
22 in	26 ft	24 ft	21 ft
24 in	26 ft	24 ft	21 ft
28 in	25 ft	22 ft	20 ft
30 in	23 ft	21 ft	19 ft
32 in	23 ft	21 ft	19 ft
36 in	21 ft	19 ft	17 ft
40 in	20 ft	18 ft	16 ft
48 in	18 ft	16 ft	15 ft



18500-45
Earth Drill

EXCAVATORS 33,000 - 48,400 LB

S6 AUGERS
6 in. - 60 in. Dia

Torque Range: 12,171 - 18,257 ft-lb
Oil Pressure Range: 2,321 - 3,481 psi

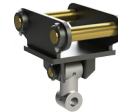
Oil Flow Range: 21 - 45 gpm
Speed Range: 12 - 26 rpm

Unit Height: 45 in.
Unit Diameter: 14 in.
Unit Weight: 593 lbs

Hitch Options: Single Pin Hitch
Double Pin Hitch
Cradle Hitch

Optional Extras: Pressure Relief Valve
2 Way Valve

Output Shaft: 2.96 in. Square



Double Pin Hitch



Single Pin Hitch



2.96 in.
Square



Double Pin
Cradle Hitch



Bolt On Pressure
Relief Valve



2 Way Valve
Converts single
acting hammer
circuit into 2 Way
auxiliary flow

GUIDE TO DRILLING PERFORMANCE*

AUGER DIA	DRILLING DEPTH IN FEET**		
	SOFT	MEDIUM	HARD
6 in	30 ft	27 ft	24 ft
8 in			
9 in			
10 in			
12 in			
14 in			
15 in	↓	↓	↓
16 in	30 ft	27 ft	24 ft
18 in	28 ft	25 ft	23 ft
20 in	28 ft	25 ft	23 ft
22 in	28 ft	25 ft	23 ft
24 in	28 ft	25 ft	23 ft
28 in	26 ft	24 ft	21 ft
30 in	25 ft	22 ft	20 ft
32 in	25 ft	22 ft	20 ft
36 in	23 ft	21 ft	19 ft
40 in	21 ft	19 ft	17 ft
48 in	20 ft	18 ft	16 ft
60 in	16 ft	15 ft	13 ft

*These charts have been created as a guide only. Actual performance figures may differ.
** The data shown has been obtained, by Auger Torque, in a controlled environment. Auger Torque cannot guarantee that this environment can be replicated and as such cannot accept liability if these figures cannot be achieved.
***Any data or specification contained within this documentation may be subject to change without prior notification. For further information please contact your authorised Auger Torque distributor.





AUGER SUMMARY

Full technical details of Augers, Extensions and Wear Parts can be found in the Auger section of this brochure.

S6 AUGERS

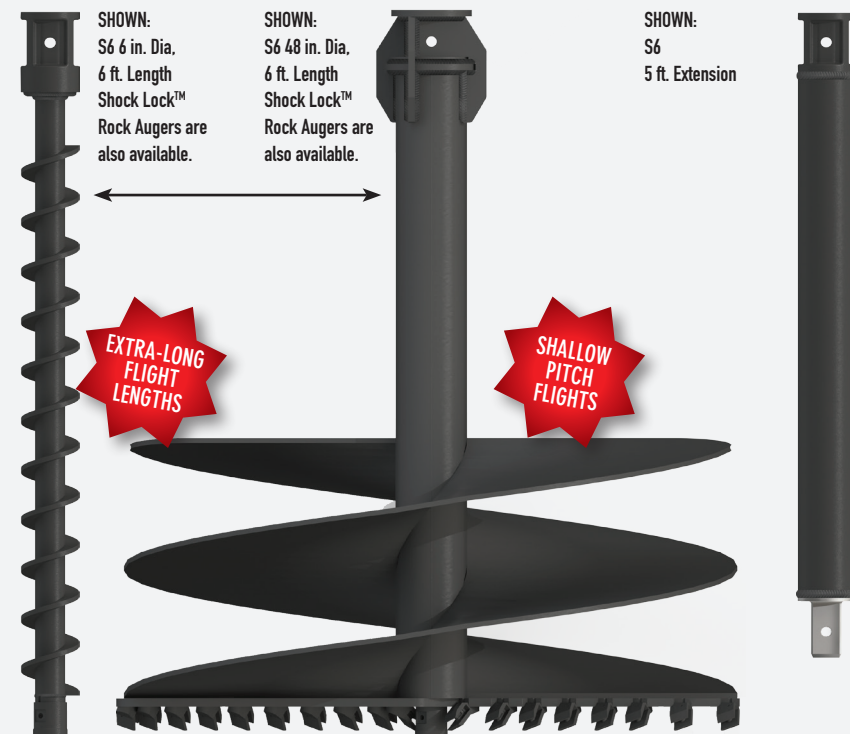
Auger Torque S6 Augers feature extra long flighted sections of shallow pitch flights. **Earth, Tungsten** and **Rock** variations are available.

Available in the following diameters:

6 in.	12 in.	18 in.	28 in.	40 in.
8 in.	14 in.	20 in.	30 in.	48 in.
9 in.	15 in.	22 in.	32 in.	
10 in.	16 in.	24 in.	36 in.	

S6 EXTENSIONS

Available in the following lengths:
5 ft. 6 ft. 6 in. 8 ft. 10 ft.



SHOCK LOCK™
Tooth Locking System

DON'T LEAVE YOUR TEETH
DOWN THE HOLE!



Augers shown feature
Shock Lock™ Toothholders.
Rock Teeth Augers are also
available.



26000-60
Earth Drill

EXCAVATORS 44,100 - 99,200 LB

PA SERIES AUGERS
12 in. - 60 in. Dia

Torque Range: 15,126 - 26,051 ft-lb
Oil Pressure Range: 2,611 - 4,496 psi
Oil Flow Range: 21 - 59 gpm
Speed Range: 11 - 31 rpm
Unit Height: 56 in.
Unit Diameter: 6 in.
Unit Weight: 974 lbs
Output Shaft Std: 3.94 in. Square
Output Shaft Opt: 4.33 in. Square
5.125 in. Square



Single Pin Hitch

3.94 in. Square
4.33 in. Square
5.125 in. Square



Double Pin Cradle Hitch



Adaptor Plate
for 26000-60



2 Way Valve
Converts single
acting hammer
circuit into 2 Way
auxiliary flow

AUGER DIA	DRILLING DEPTH IN FEET**		
	SOFT	MEDIUM	HARD
12 in	35 ft	31 ft	28 ft
14 in	↓	↓	↓
15 in	35 ft	31 ft	28 ft
16 in	33 ft	30 ft	27 ft
18 in	33 ft	30 ft	27 ft
20 in	31 ft	28 ft	25 ft
22 in	31 ft	28 ft	25 ft
24 in	30 ft	27 ft	24 ft
28 in	30 ft	27 ft	24 ft
30 in	30 ft	27 ft	24 ft
32 in	30 ft	27 ft	24 ft
36 in	28 ft	25 ft	23 ft
40 in	26 ft	24 ft	21 ft
48 in	25 ft	22 ft	20 ft
60 in	23 ft	21 ft	19 ft



31000-60
Earth Drill

EXCAVATORS 44,100 - 99,200 LB

PA SERIES AUGERS
12 in. - 72 in. Dia

Torque Range: 18,151 - 31,260 ft-lb
Oil Pressure Range: 2,611 - 4,496 psi
Oil Flow Range: 21 - 59 gpm
Speed Range: 9 - 26 rpm
Unit Height: 56 in.
Unit Diameter: 16 in.
Unit Weight: 974 lbs
Output Shaft Std: 3.94 in. Square
Output Shaft Opt: 4.33 in. Square
5.125 in. Square



3.94 in. Square



4.33 in. Square



5.125 in. Square



Single Pin Hitch



Double Pin Cradle Hitch



Adaptor Plate
for 31000-60



2 Way Valve
Converts single
acting hammer
circuit into 2 Way
auxiliary flow

GUIDE TO DRILLING PERFORMANCE*

AUGER DIA	DRILLING DEPTH IN FEET**		
	SOFT	MEDIUM	HARD
12 in	38 ft	34 ft	31 ft
14 in	↓	↓	↓
15 in	38 ft	34 ft	31 ft
16 in	36 ft	33 ft	30 ft
18 in	36 ft	33 ft	30 ft
20 in	34 ft	31 ft	29 ft
22 in	34 ft	31 ft	29 ft
24 in	33 ft	30 ft	27 ft
28 in	33 ft	30 ft	27 ft
30 in	30 ft	27 ft	24 ft
32 in	30 ft	27 ft	24 ft
36 in	28 ft	25 ft	23 ft
40 in	26 ft	24 ft	21 ft
48 in	25 ft	22 ft	20 ft
60 in	23 ft	21 ft	19 ft
72 in	20 ft	18 ft	16 ft



35000-80
Earth Drill

EXCAVATORS 46,300 - 99,200 LB

PA SERIES AUGERS
12 in. - 96 in. Dia

Torque Range: 17521 - 35042 ft-lb
Oil Pressure Range: 2,321 - 4,641 psi
Oil Flow Range: 26 - 80 gpm
Speed Range: 10 - 30 rpm
Unit Height: 56 in.
Unit Diameter: 16 in.
Unit Weight: 1,041 lbs
Output Shaft Std: 3.94 in. Square
Output Shaft Opt: 4.33 in. Square
5.125 in. Square



3.94 in. Square



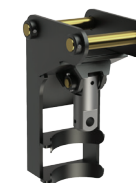
4.33 in. Square



5.125 in. Square



Single Pin Hitch



Double Pin Cradle Hitch



Adaptor Plate
for 35000-80



2 Way Valve
Converts single
acting hammer
circuit into 2 Way
auxiliary flow

GUIDE TO DRILLING PERFORMANCE*

AUGER DIA	DRILLING DEPTH IN FEET**		
	SOFT	MEDIUM	HARD
12 in	39 ft	35 ft	32 ft
14 in	↓	↓	↓
15 in	↓	↓	↓
16 in	39 ft	35 ft	32 ft
18 in	38 ft	34 ft	31 ft
20 in	38 ft	34 ft	31 ft
22 in	36 ft	32 ft	29 ft
24 in	36 ft	32 ft	29 ft
28 in	34 ft	31 ft	28 ft
30 in	33 ft	30 ft	27 ft
32 in	33 ft	30 ft	27 ft
36 in	31 ft	28 ft	25 ft
40 in	30 ft	27 ft	24 ft
48 in	27 ft	25 ft	22 ft
60 in	25 ft	22 ft	20 ft
72 in	21 ft	19 ft	17 ft
78 in	19 ft	17 ft	15 ft
86 in	17 ft	16 ft	14 ft
96 in	16 ft	14 ft	13 ft

*These charts have been created as a guide only. Actual performance figures may differ.

** The data shown has been obtained, by Auger Torque, in a controlled environment. Auger Torque cannot guarantee that this environment can be replicated and as such cannot accept liability if these figures cannot be achieved.

***Any data or specification contained within this documentation may be subject to change without prior notification. For further information please contact your authorised Auger Torque distributor.



AUGER SUMMARY

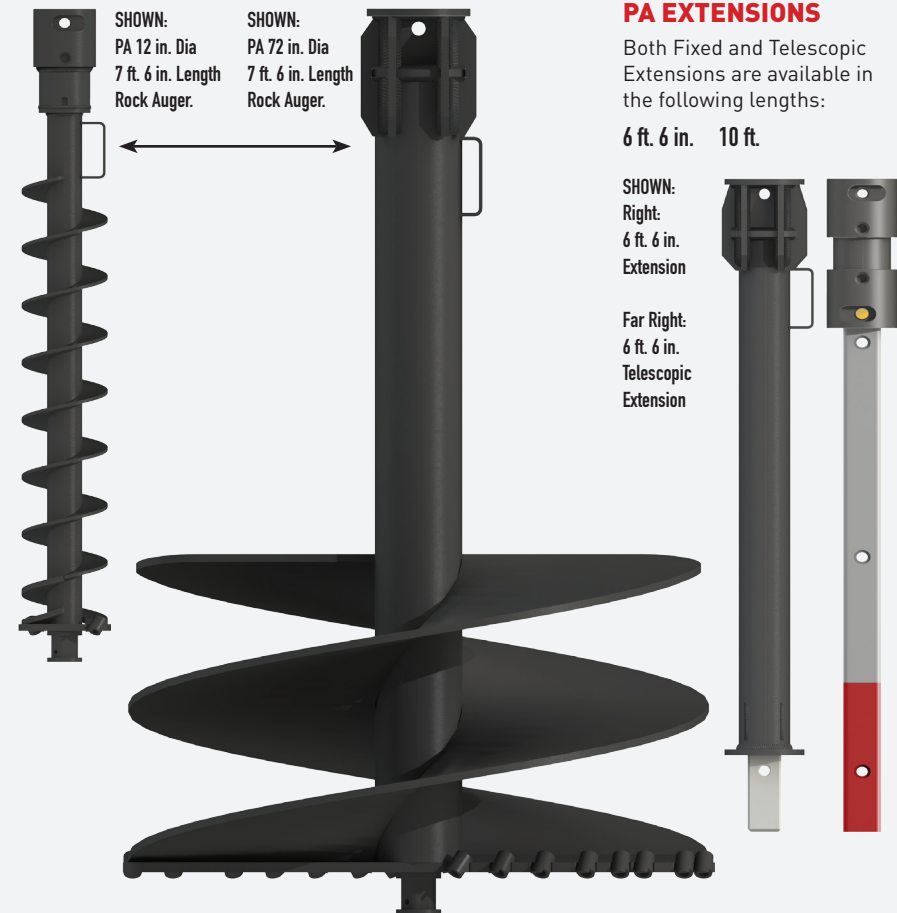
Full technical details of Augers, Extensions and Wear Parts can be found in the Auger section of this brochure.

PA AUGERS

Auger Torque PA Augers feature extra long flighted sections of shallow pitch flights and are available in 7.5 ft. and 10.8 ft. lengths. **Earth** and **Rock** variations are available.

Available in the following diameters:

12 in.	18 in.	24 in.	32 in.	48 in.	78 in.	For Augers over 60 in. diameter please call our sales office for further information.
14 in.	20 in.	28 in.	36 in.	60 in.	86 in.	
16 in.	22 in.	30 in.	40 in.	72 in.	96 in.	



AUGERS

Features of our Augers

HUB OPTIONS

Augers are available with all major standard hubs on the market, including:

2", 2.5", 3" and 4" Hex

2" and 2.56" Round

2.25", 2.96", 3.94", 4.33" and 5.125"

Square ...to name but a few.

HEAVY DUTY TUBE

We know that our Augers can expect a tough life so we only use the highest grade steel and vary our tube size according to machine size and application. Our Augers have a reputation of being the toughest on the market.

SHALLOW PITCH FLIGHTS

By working with and, more importantly, listening to operators feedback we have developed the perfect pitch for our flights. It will cut at its maximum efficiency and, most importantly the spoil will stay on your Auger when you remove it from the hole.

SHOCK LOCK™ Tooth Locking System

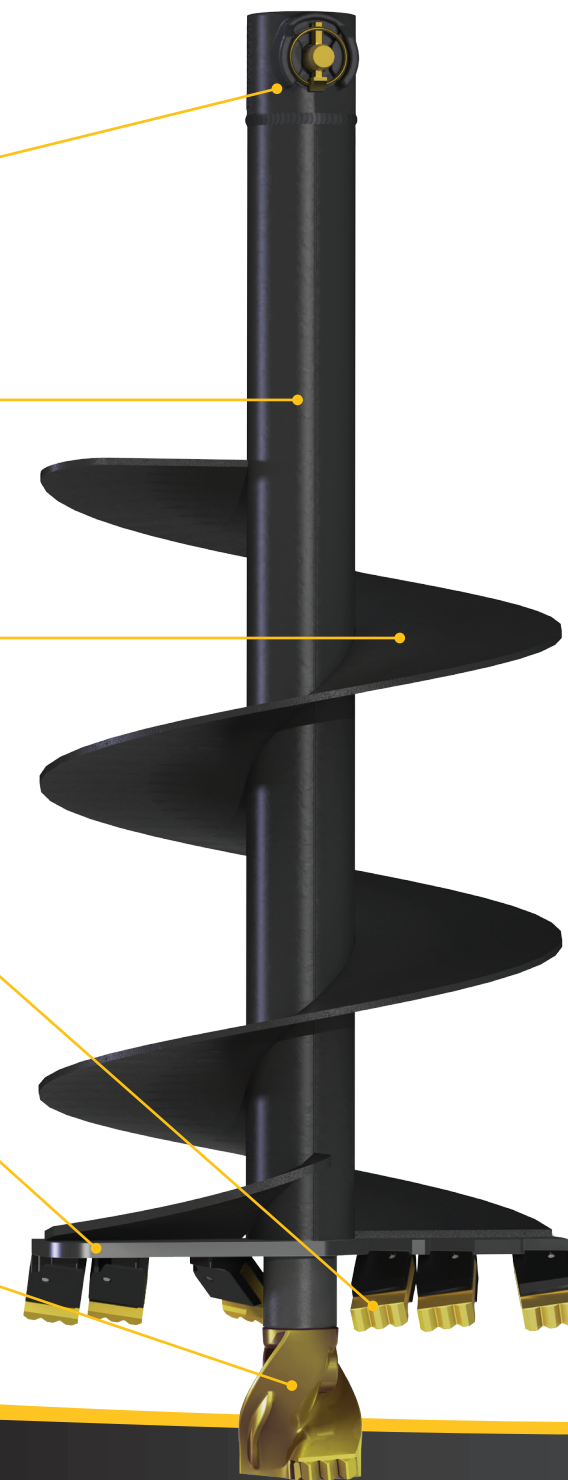
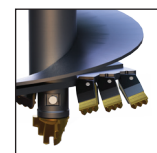
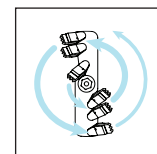
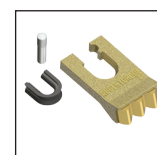
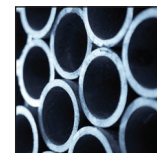
Are you tired of losing your teeth down the hole? With our patented **Shock Lock™** Tooth Locking System loss is now a thing of the past. The simple but effective locking pin holds teeth secure in both directions.

CONSTANT SPIRAL CUT

Our boring heads are designed with a Constant Spiral Cut. Teeth are located so that each makes its own fresh cut on every revolution and are angled to direct spoil towards the centre of the auger. The tooth cutting angle ensures spoil is broken up thoroughly to avoid any clogging.

PILOT AND TOOTH OPTIONS

Auger Torque Augers are offered with many different tooth and pilot options to suit your specific need. For example in the S4 range we offer up to eight different combinations and we have the know-how to help you select the optimal configuration.

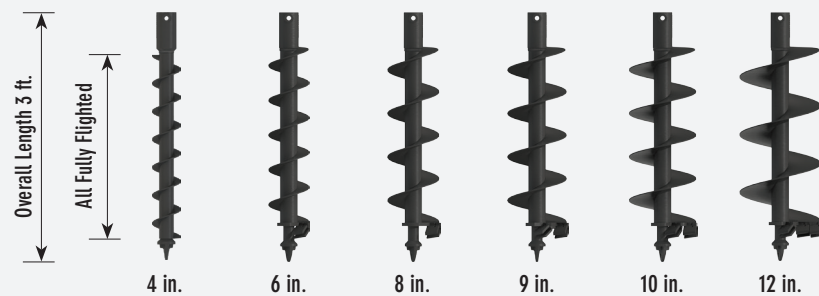


S2 AUGERS

MICRO EXCAVATORS 0.75 - 1 TON

With our patented **Shock Lock™** Tooth Locking System tooth loss is now a thing of the past. Using the **Shock Lock™** pin and rubber in our unique **Shock Lock™** tooth holders ensures your Auger teeth are safely locked in place and protected against shock fractures.

Replacing worn teeth is a breeze with this system, simply knock out the old pin with a standard hole punch and the tooth will slide out of the holder with ease. Acclaimed as the best system on the market you will never need to worry about fitting spare teeth due to losing them again.



HUB OPTIONS



EARTH WEAR PARTS



EXTRAS



WEAR PARTS FOR GROUND CONDITIONS

EARTH (Shock Lock™)

Best suited to soft grounds like earth and clay.



S4 AUGERS

MINI EXCAVATORS 1 - 5 TON, MINI LOADERS,
SKIDSTEER LOADERS UP TO 80HP AND
TRUCK CRANES UP TO 9 TON / METRE

HUB OPTIONS



2.56 in.
Round



2" Hex



2.25 in.
Square

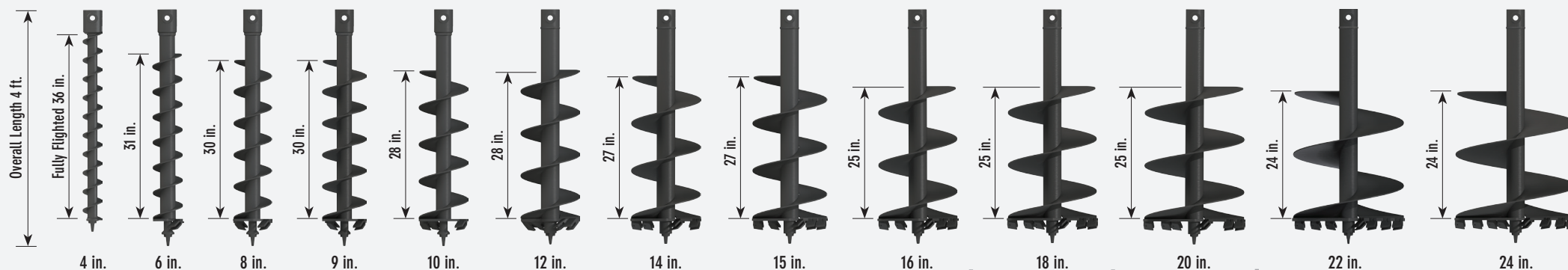
SHOCK LOCK™ Tooth Locking System

DON'T LEAVE
YOUR TEETH
DOWN THE
HOLE!



With our patented **Shock Lock™** Tooth Locking System tooth loss is now a thing of the past. Using the **Shock Lock™** pin and rubber insert in our unique **Shock Lock™** tooth holders ensures your Auger teeth are safely locked in place and protected against shock fractures.

Replacing worn teeth is a breeze with this system, simply knock out the old pin with a standard hole punch and the tooth will slide out of the holder with ease. Acclaimed as the best system on the market you will never need to worry about fitting spare teeth due to loss again.



Earth Drill **X1100-13**
Earth Drill **ML1100-13**

Earth Drill **X1600-15**
Earth Drill **ML1600-15**

Earth Drill **X2100-17**
Earth Drill **ML2100-17**

Earth Drill **2200-20**
Earth Drill **2300-10**

Earth Drill **2700-25**

Earth Drill **3300-30**

EARTH WEAR PARTS



S2/4
Earth Pilot
33-9203-KIT

S2/4 Shock Lock™
Earth Tooth
33-9121-KIT

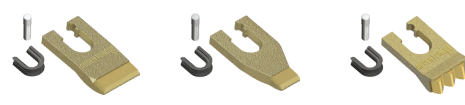
TUNGSTEN WEAR PARTS



S4
Flat Tungsten Pilot
33-9222-KIT

S4
Tungsten Pilot
33-9204-KIT

S4
Extra Dig Pilot
33-9212-KIT



S4 Shock Lock™
Flat Tungsten Tooth
33-9124-KIT

S4 Shock Lock™
Flat Tungsten Chisel
33-9123-KIT

S4 Shock Lock™
Tungsten Tooth
33-9122-KIT

S4 Shock Lock™
Tungsten Chisel
33-9125-KIT

EXTRAS



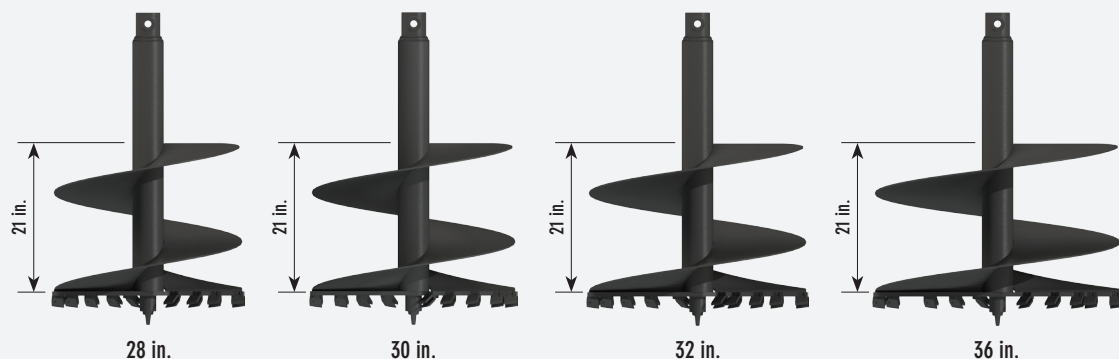
Pin & Clip
2.56" Round
30-0004-KIT

Pin & Clip
2" Hex
30-0003-KIT

S1/2/4 Shock Lock™
Tooth Holder
33-1010

S4 Pilot
Extension
33-4106-KIT

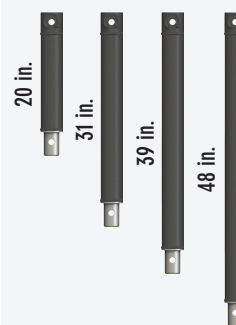
S4 Drive Lugs
33-4102
33-4105
33-4110



All the Augers above are shown with
Shock Lock™ Tooth Holders.

* Overall Length given includes the
auger fitted with wear parts.

S4 EXTENSIONS



WEAR PARTS REQUIRED FOR GROUND CONDITIONS

EARTH (Shock Lock™)

Best suited to soft grounds like earth and clay.

FLAT TUNGSTEN (Shock Lock™)

Best suited to soft abrasive grounds like sand, to help
reduce wear.

FLAT TUNGSTEN CHISEL (Shock Lock™)

Used in conjunction with standard full width Flat
Tungsten Teeth. Improves cutting where low down
pressure machines are being used, i.e. Mini Loaders,
small Skid Steer Loaders & small Excavators. Must only
be fitted to the inside tooth holders with standard full
width Flat Tungsten Teeth being fitted on the outer most
holders.

TUNGSTEN (Shock Lock™)

Best used in dry, hard or medium ground conditions
where floating rocks may be encountered. The perfect
all-rounder if you are not sure about what you might
encounter.

TUNGSTEN CHISEL (Shock Lock™)

Used in conjunction with standard full width Tungsten
Teeth. Improves cutting where low down pressure
machines are being used, i.e. Mini Loaders, small Skid
Steer Loaders & small Excavators. Must only be fitted
to the inside tooth holders with standard full width
Tungsten Teeth being fitted on the outer most holders.

EXTRA DIG PILOT

A stronger Pilot for more demanding ground conditions.

S5 AUGERS

EXCAVATORS FROM 4.5 - 8 TON, TELEHANDLERS,
HIGH FLOW SKIDSTEER LOADERS, BACKHOES
AND TRUCK CRANES FROM 9 - 18 TON / METRE

HUB OPTIONS



2.96 in.
Square



2.5 in.
Hex

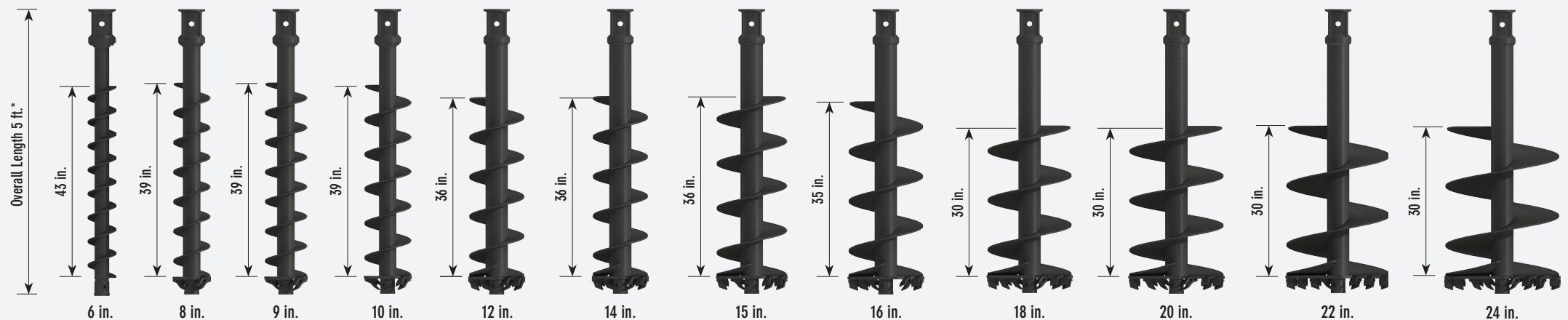
SHOCK LOCK™ Tooth Locking System

DON'T LEAVE
YOUR TEETH
DOWN THE
HOLE!



With our patented **Shock Lock™** Tooth Locking System tooth loss is now a thing of the past. Using the **Shock Lock™** pin and rubber insert in our unique **Shock Lock™** tooth holders ensures your Auger teeth are safely locked in place and protected against shock fractures.

Replacing worn teeth is a breeze with this system, simply knock out the old pin with a standard hole punch and the tooth will slide out of the holder with ease. Acclaimed as the best system on the market you will never need to worry about fitting spare teeth due to loss again.



Earth Drill **4000-30**

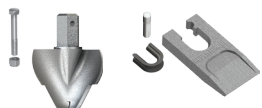
Earth Drill **4000-14**

Earth Drill **5200-35**

Earth Drill **5000-14**

Earth Drill **6000-40**

EARTH WEAR PARTS



S5/6
Earth Pilot
33-9205-KIT

S5/6 Shock Lock™
Earth Tooth
33-9126-KIT

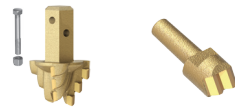
TUNGSTEN WEAR PARTS



S5/6
Tungsten Pilot
33-9206-KIT

S5/6 Shock Lock™
Tungsten Tooth
33-9127-KIT

ROCK WEAR PARTS



S5/6
Rock Pilot
33-9207-KIT

S5/6
Rock Tooth
33-9107

EXTRAS



Pin & Clip
2.5" / 3" Square
30-0002-KIT

S5/6 Shock Lock™
Tooth Holder
33-1011

S5/6 Rock
Tooth Holder
33-1013

S5/6 Drive Socket
1 3/4" Hex
33-4103

WEAR PARTS REQUIRED FOR GROUND CONDITIONS

EARTH (Shock Lock™)

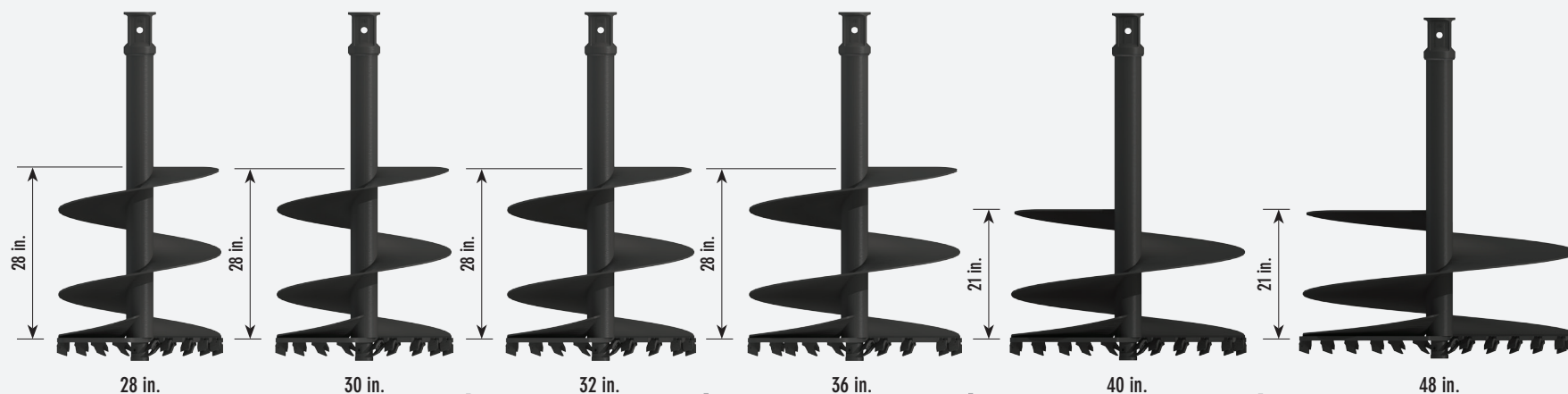
Best suited to soft grounds like earth and clay.

TUNGSTEN (Shock Lock™)

Best used in dry, hard or medium ground conditions where floating rocks may be encountered. The perfect all-rounder if you are not sure about what you might encounter.

ROCK (Taper Lock)

For very hard ground and tarmac where extra cutting is needed and high wear is expected. Most effective on machines with high down pressure.

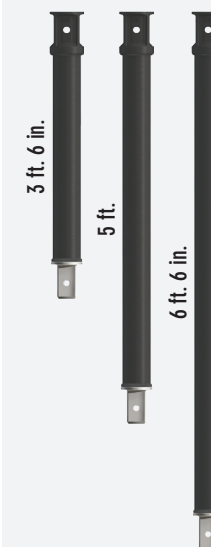


All the Augers above are shown with **Shock Lock™** Tooth Holders. Rock Teeth require a Rock Tooth version of the Auger.
* Overall Length given includes the auger fitted with wear parts.

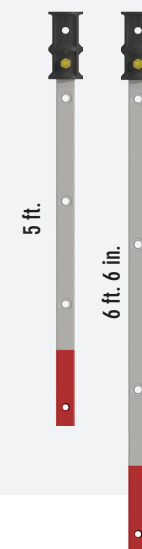
Augers over 40 in. - special order up to 48 in.

For Augers over 40 in. diameter please call our sales office for further information.

S5 EXTENSIONS



S5 TELESCOPIC



S6 AUGERS

EXCAVATORS & BACKHOES FROM 8 - 22 TON

HUB OPTIONS



2.96 in.
Square

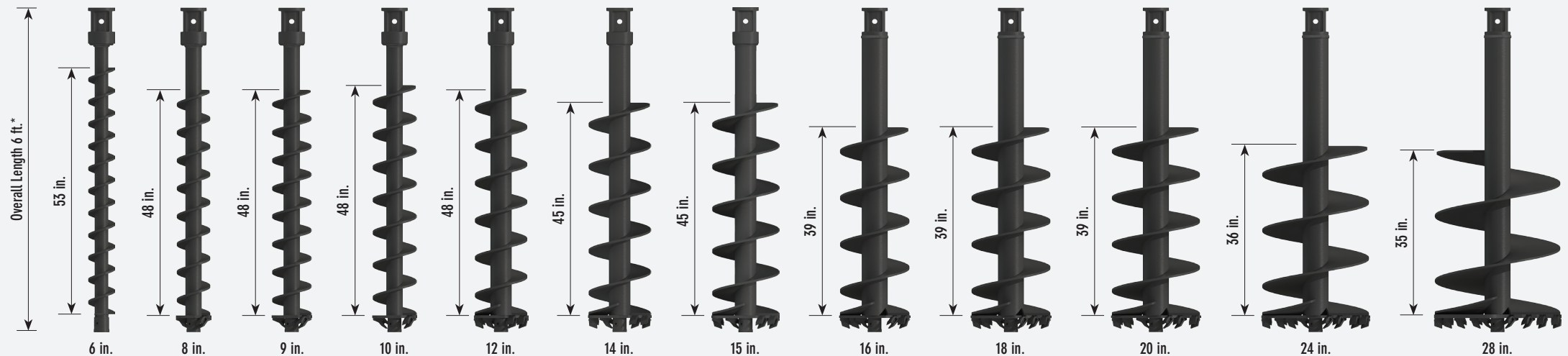
SHOCK LOCK™ Tooth Locking System

DON'T LEAVE
YOUR TEETH
DOWN THE
HOLE!



With our patented **Shock Lock™** Tooth Locking System tooth loss is now a thing of the past. Using the **Shock Lock™** pin and rubber insert in our unique **Shock Lock™** tooth holders ensures your Auger teeth are safely locked in place and protected against shock fractures.

Replacing worn teeth is a breeze with this system, simply knock out the old pin with a standard hole punch and the tooth will slide out of the holder with ease. Acclaimed as the best system on the market you will never need to worry about fitting spare teeth due to loss again.



Earth Drill **8000-40**

Earth Drill **11000-40**

Earth Drill **11000-45**

Earth Drill **15000-45**

Earth Drill **18500-45**

EARTH WEAR PARTS



S5/6
Earth Pilot
33-9205-KIT

S5/6 Shock Lock™
Earth Tooth
33-9126-KIT

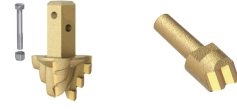
TUNGSTEN WEAR PARTS



S5/6
Tungsten Pilot
33-9206-KIT

S5/6 Shock Lock™
Tungsten Tooth
33-9127-KIT

ROCK WEAR PARTS



S5/6
Rock Pilot
33-9207-KIT

S5/6
Rock Tooth
33-9107

EXTRAS



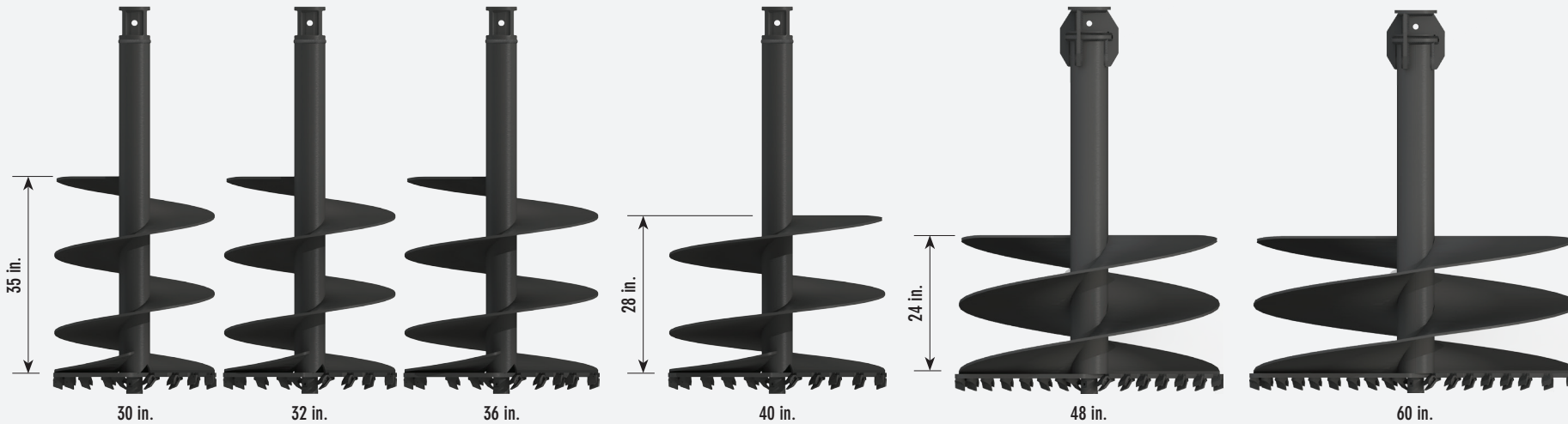
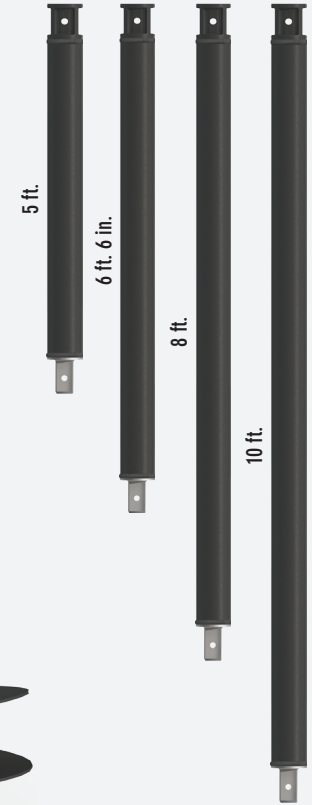
Pin & Clip
2.5" / 3" Square
30-0002-KIT

S5/6 Shock Lock™
Tooth Holder
33-1011

S5/6 Rock
Tooth Holder
33-1013

S5/6 Drive Socket
1 3/4" Hex
33-4103

S6 EXTENSIONS



All the Augers above are shown with **Shock Lock™** Tooth Holders. Rock Teeth require a Rock Tooth version of the Auger.

Augers of a larger diameter and length can be manufactured for use with these Earth Drills, but technical advice is required. Call one of our main offices for more details.

WEAR PARTS FOR GROUND CONDITIONS

EARTH (Shock Lock™)
Best suited to soft grounds like earth and clay.

TUNGSTEN (Shock Lock™)
Best used in dry, hard or medium ground conditions where floating rocks may be encountered. The perfect all-rounder if you are not sure about what you might encounter.

ROCK (Taper Lock)
For very hard ground and tarmac where extra cutting is needed and high wear is expected. Most effective on machines with high down pressure.

PA AUGERS

EXCAVATORS 17 - 45 TON

HUB OPTIONS



4.33 in.
Square



3.94 in. Square and 5.125 in. Square
options are also available.

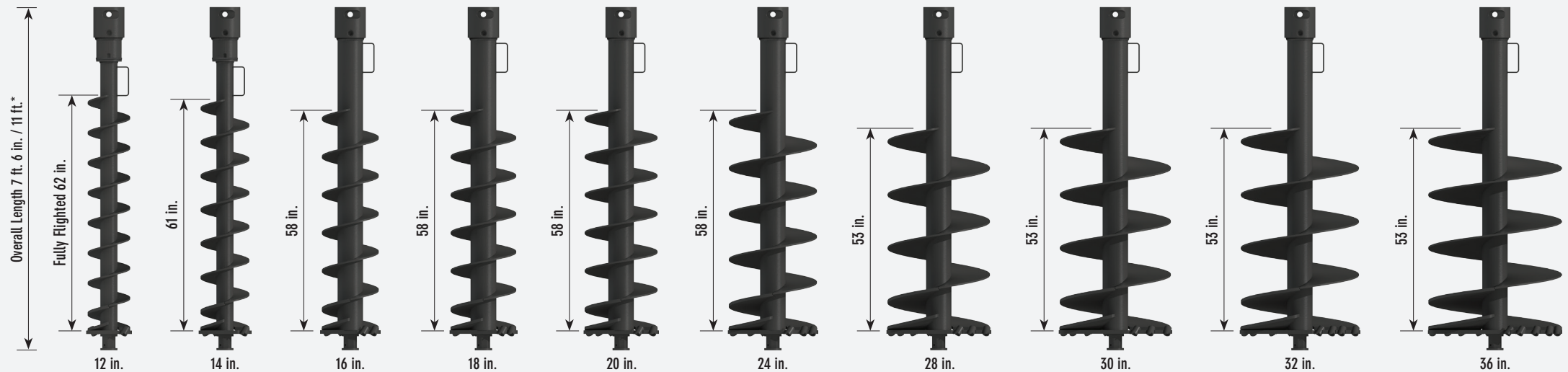


**PA Augers are available in
7 ft. 6 in. and 11 ft. lengths
as standard - Please
specify when ordering**



The PA Range of Augers are the most heavy-duty units available and are available in 7 ft. 6 in. and 11 ft. lengths as standard. Fully flighted versions are available also.

Our standard PA Auger range has a maximum diameter of 60 in. however Augers with a diameter of up to 96 in. can be manufactured on request. Contact our sales office for further information.



Earth Drill **26000-60**

Earth Drill **31000-60**

Earth Drill **35000-80**

EARTH WEAR PARTS



ROCK WEAR PARTS



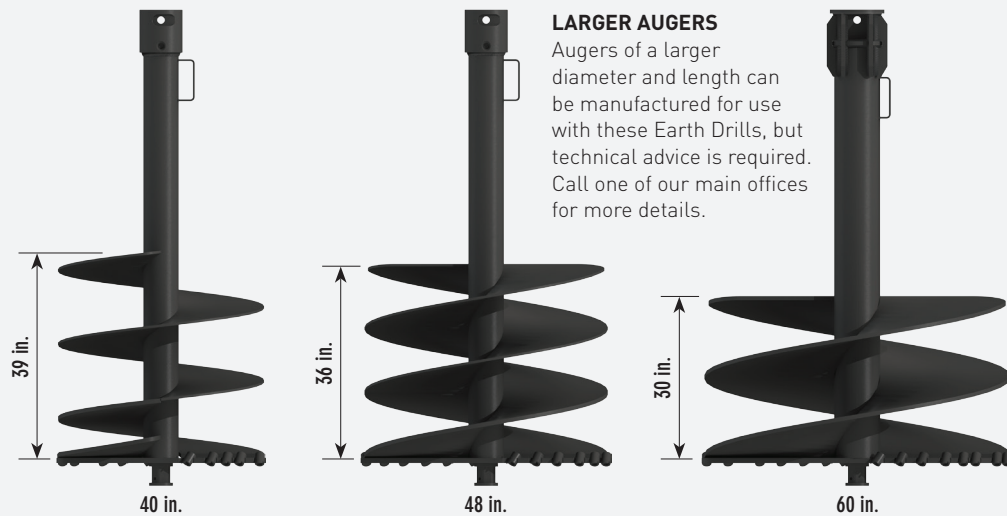
The PA Rock Pilot can be purchased in separate sections or as a whole assembly when buying replacement parts.

EXTRAS



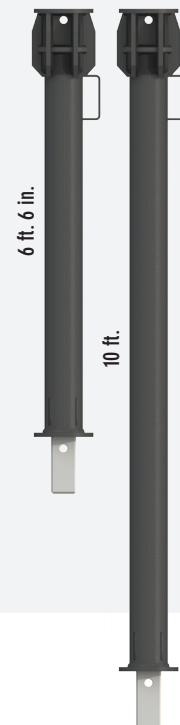
* Overall Length given includes the auger fitted with wear parts.

For Augers over 60 in. diameter please call one of our main offices for further information.

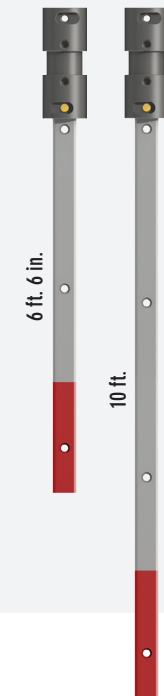


Augers over 60 in. - special order up to 80 in.

PA EXTENSIONS



PA TELESCOPIC



WEAR PARTS FOR GROUND CONDITIONS

EARTH (Taper Lock)

Best suited to soft grounds like earth and clay.

ROCK (Taper Lock)

For very hard ground and tarmac where extra cutting is needed and high wear is expected. Most effective on machines with high down pressure.

TCH Auger Range

For the most demanding drilling situations

HUB OPTIONS

Tapered Cutting Heads are available in 2 popular sizes; 2.96 in. and 4.33 in. Square.

HEAVY DUTY TUBE

We know that the TCH Auger range will be used for the toughest applications so we only use the highest grade steel and vary our tube size according to machine size and application.

SHALLOW PITCH FLIGHTS

By working with and, more importantly, listening to operators feedback we have developed the perfect pitch for our flights. It will cut at its maximum efficiency and, most importantly the spoil will stay on your cutting head when you remove it from the hole.

TAPERED CUTTING PATH

Our cutting heads are designed with a Constant Spiral Cut. Teeth are located so that each makes its own fresh cut on every revolution and are angled to direct spoil towards the centre of the Cutting Head. The tooth cutting angle ensures spoil is broken up thoroughly to avoid any clogging.

ROCK PILOT AND TOOTH

Auger Torque Tapered Cutting Heads are offered with our rugged Rock tooth and pilot options to suit your specific need.



FEATURES

- Drilling performance is increased due to precisely calculated tooth positions along the edges of the cutting head
- Improved productivity when cutting through hard ground and fractured rock
- The positioning of the teeth increases the penetrative forces which can be found on the tooth cutting edge
- This increase in force fractures the substrate into large pieces bringing them to the surface at an increased rate compared to traditional cutting heads
- Patents Pending:
 - British Patent Pending: 1505626
 - Australia Patent Pending: 2015201716



24 in. DIAMETER HOLE INTO SOLID CONCRETE



Truck Cranes & The Rope Wind Hitch

Growing in popularity, truck cranes allow a great deal of flexibility when working off site. On-board hydraulics allow trucks to deliver materials where no loading facilities are available.

Equally, remote working can be made easy by using the truck crane boom for earth drilling operations. Flat bed trucks equipped with Truck Crane Earth Drills turn telegraph and power pole as well as street light installations into a single man operation and foundation piling can all be facilitated with the use of one vehicle.

The ingenious Auger Torque Rope Wind Hitch allows for safe and secure storage during transit without the need to disassemble the unit from the boom.

BOOM CLAMP

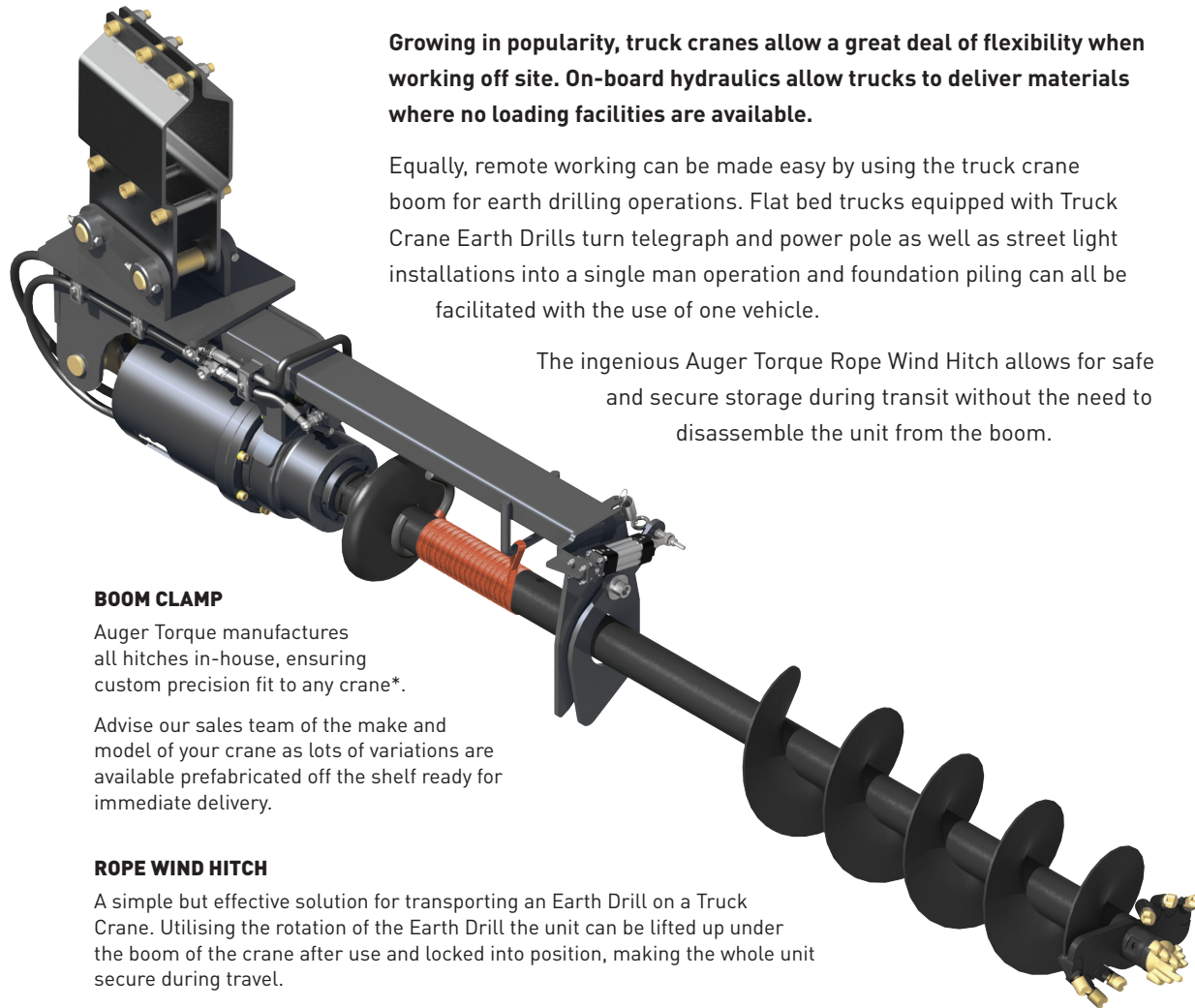
Auger Torque manufactures all hitches in-house, ensuring custom precision fit to any crane*.


Advise our sales team of the make and model of your crane as lots of variations are available prefabricated off the shelf ready for immediate delivery.

ROPE WIND HITCH

A simple but effective solution for transporting an Earth Drill on a Truck Crane. Utilising the rotation of the Earth Drill the unit can be lifted up under the boom of the crane after use and locked into position, making the whole unit secure during travel.

*Contact Auger Torque for further details.





Our world beating products are now in use on ALL of the world's continents after one of Auger Torque's Earth Drills was used to bore through the ice as part of the Lake Ellsworth exploration project in Antarctica.

BBC News showed an Auger Torque 2300-10 taking a lead role in what is considered to be the most important geological survey of the sub-continent in decades; unlocking the secrets of the hidden Lake Ellsworth from beneath the polar ice cap.

The 2300-10 was chosen by the British Antarctic Survey for its reliability in extremely demanding conditions.

The Earth Drill was used to bore holes in the pack ice for pilot holes. Steve White, the Head of Vehicles Engineering said "Being so remote and having only a narrow window of opportunity to sample the lake means we need to know that the equipment will be 100% reliable. Only the best was going to be good enough for hassle free drilling".

Today, we have equipment working in the full spectrum of temperatures experienced on all seven continents.

The British Antarctic Survey's choice confirms the confidence we place in our products.

XHT Torque Heads

Features of our Screw Pile Torque Heads

Auger Torque is proud to announce the release of our brand new XHT Series Torque Heads. Specifically designed and ideally suited to foundation screw pile applications this series heralds a new era in the world of screw pile torque heads.

The new torque heads are available to suit machines from as little as 53,000lb all the way to 110,000lb and are designed and manufactured in-house at Auger Torque's UK facility, guaranteeing class leading workmanship and the reliability Auger Torque is famous for.

INTEGRAL GEAR OIL COOLING

Our unique design allows for efficient oil cooling via auto circulation of the fluid without the need for an external mechanical pump. This system effectively protects your investment during extreme high torque screw pile applications.

EPICYCLIC GEARBOX

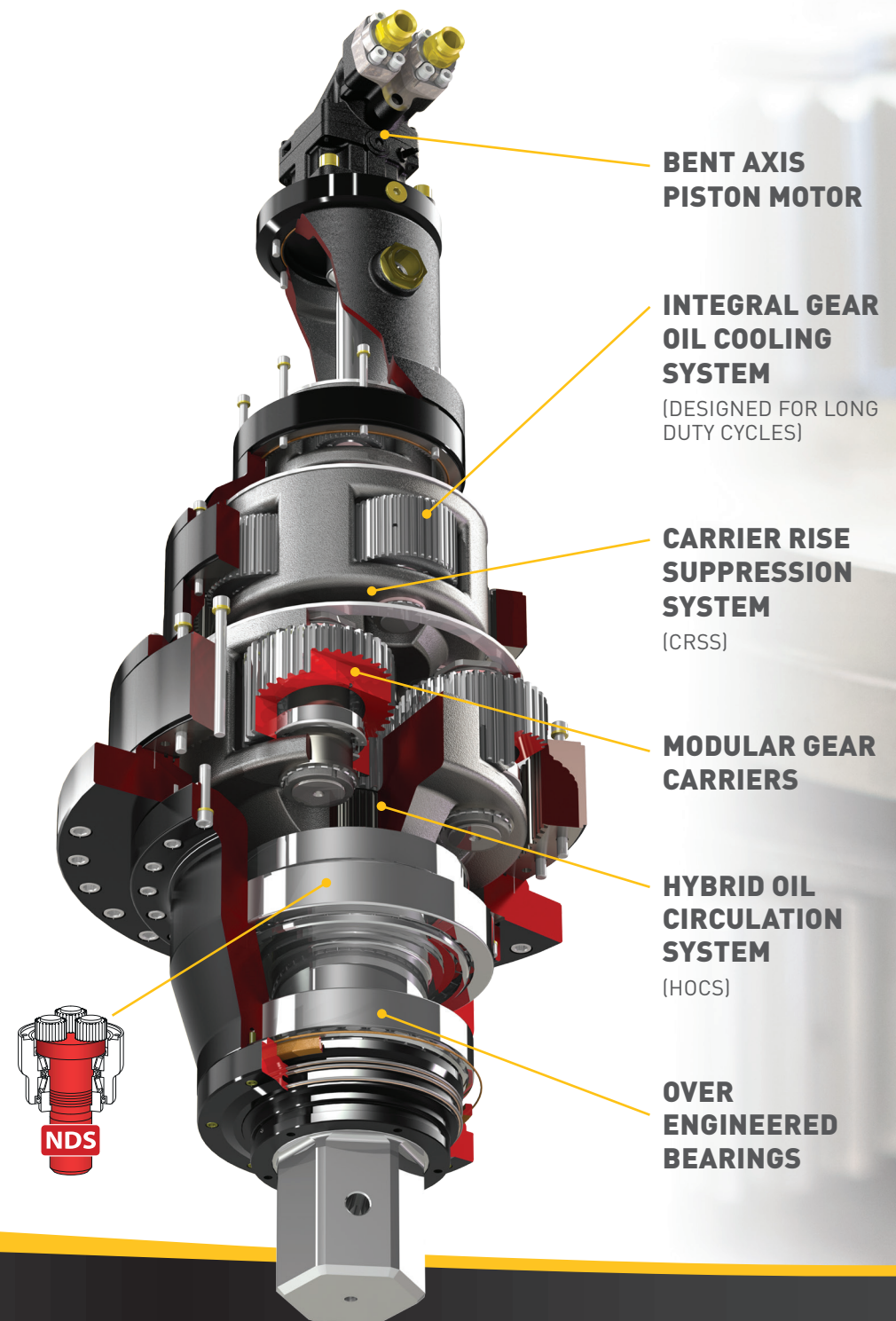
Torque is amplified by using the unique Auger Torque planetary gearbox. This system allows the motors output torque to be multiplied with extreme efficiency as well as ensuring the durability and reliability you need.

HIGH QUALITY HYDRAULIC MOTORS

As with our Earth Drill range, we use the highest quality suppliers to develop the most reliable attachments available on the market today.

NON-DISLODGE MENT SHAFT

Unique to Auger Torque, the Non-Dislodgement Shaft is a single piece drive shaft assembled top down and locked into the XHT Torque Head housing. This design guarantees that the shaft will never fall out, making for a safer work environment, not only for the operator but also any surrounding workers, a **MUST-HAVE FEATURE** for any safety conscious company.





**A new era in the world of
SCREW PILE TORQUE HEADS**



**WATCH
VIDEO**

XHT Torque Heads

110XHT

EXCAVATORS
52,900 - 110,200 Lbs

Torque Range: 47,816-107,587 ft-lb
Oil Pressure Range: 2,321-5,221 psi

Oil Flow Range: 26-85 gpm
Speed Range: 4-13 rpm

Unit Height: 85.26"
Unit Diameter: 32.48"
Unit Weight: 5,291 lbs

Hitch Options: Single Pin Hitch
Double Pin Hitch
Double Pin Cradle Hitch

Output Shaft: 7.09" Hex



Double Pin
Cradle Hitch



7.09" Hex

166XHT

EXCAVATORS
52,900 - 110,200 Lbs

Torque Range: 96,471-166,146 ft-lb
Oil Pressure Range: 2,611-4,496 psi

Oil Flow Range: 21-59 gpm
Speed Range: 1.8-4.9 rpm

Unit Height: 85.26"
Unit Diameter: 32.48"
Unit Weight: 5,291 lbs

Hitch Options: Single Pin Hitch
Double Pin Hitch
Double Pin Cradle Hitch

Output Shaft: 7.09" Hex



Double Pin
Cradle Hitch



7.09" Hex



Screw Pile Installations



Many of Auger Torque's Earth Drills, from the robust Earth Drill 8000-40 upwards, are excellent tools for screw pile installation due to their high levels of torque and range of rotational speed.

Couple this with the all new electronic torque metering linkage block which has an accuracy rating of over 99% and you have all you need for fast and precise Screw Pile installation.

Screw piles can be used as a steel foundation solution for railway and highway installations, masts, towers, cantilever gantries, platforms, lighting columns and sign posts. They support structures in both tension and compression, providing an ideal solution where overturning forces are significant or when ground conditions aren't suitable for other methods of foundation.

Quick and easy to install, in many cases the piles and associated structures can be installed in a day. Using the torque metering linkage block, applied torques can be displayed and logged for data analysis.

Made from galvanised steel, Screw Piles are also maintenance free and reusable after removal from temporary installations.

BENEFITS OF SCREW PILES INCLUDE:

- Quick and easy to install
- No concrete mixing or curing time
- No excavations needed or spoil to remove
- Suitable for soft or mixed composite ground
- Installations possible in low temperatures and wet conditions
- Can be installed around existing underground services
- Removable and re-useable

Screw Piles can be made to customers own specifications - talk to your closest Auger Torque main office for more information.

Alignment Monitor

Perfect for Auger and Screw Pile applications, the Auger Torque Alignment Monitor is the essential tool for ensuring your application is precise and quick.

Not restricted to parent machine size, the Alignment Monitor is easy to install. With universal mounting of both the alignment sensor and TFT user display, the sensor is fixed to the top of your existing earth drill. The bright TFT display is mounted inside the operators cab in a convenient location. Plug the power lead into the 12/24V power socket, and you're good to go.

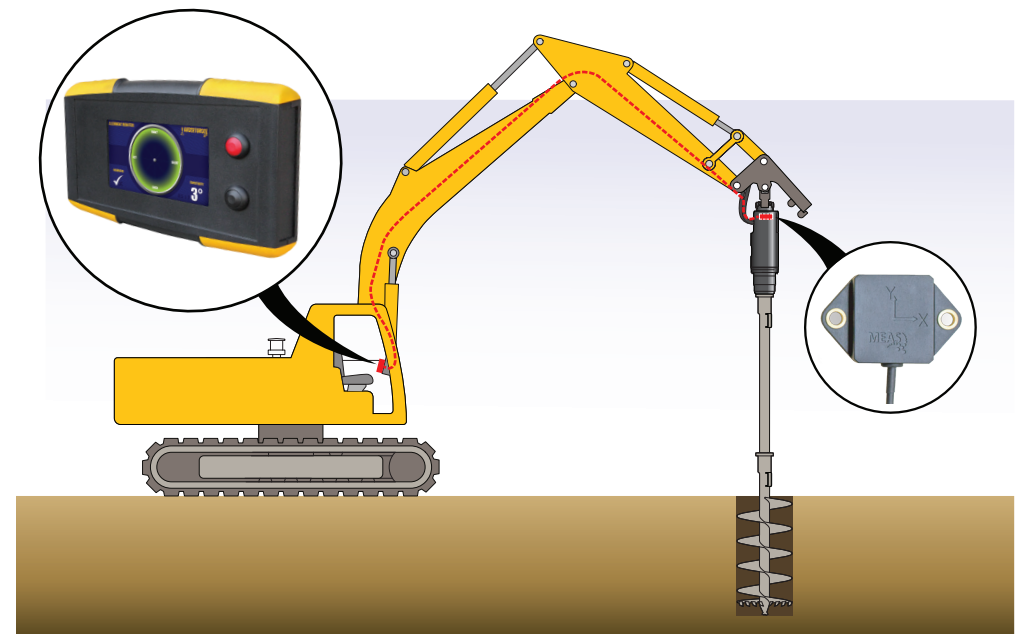
The Alignment Monitor has 4 sensitivity settings from 1 to 5° increments, allowing you to adjust to suit the application.

Now that the operator can see the alignment in all directions, there is no need for additional operatives. Perfectly aligned installations are now a one man operation.



FEATURES

- Plug and play capability
- Alignment display easily installed in operator cab
- A compact, bright TFT interface
- Alignment sensor fits to your existing earth drill
- Sensitivity adjustment to suit the application
- IP54 rated - suitable for use in all weathers
- 12-24V operating range
- One man operation





Torque Monitor

Applying the correct torque during the installation of Screw Piles is paramount to ensure the structure is safely secured.

Receiving data of real-time applied torque which is accurate to 99.7% for this critical procedure is made easy with this new Auger Torque device.

The Torque Monitor is simply attached between the mounting bracket and the Earth Drill hood pin.* The sophisticated sensors inside send instant data to a hand-held PDA, allowing operators to work with ultimate efficiency.

Our Torque Monitor's are able to measure torque values up to 47,944 ft-lbs. The Monitor's are ideally suited to the Earth Drill range 8000-40 - 3500-80 range and our XHT Torque Head range, but will work in conjunction with the majority of our other Earth Drills.

FEATURES

- Measure up to 47,944 ft-lbs.
- Quick and easy to install
- Correct torque measurement when installing screw anchors to an accuracy of 99.7%
- Allows operators to work with ultimate efficiency
- Wireless transmission
- Real time data transfer
- Compatible with Auger Torque and OEM earth drills

*166XHT: mount onto output shaft



TM25

Torque Range: 3,688-18,440 ft-lbs
Earth Drill Range: 8000-40 - 18500-45
Unit Height: 16.9 in.
Unit Diameter: 10.6 in.
Unit Weight: 130 lbs
Hitch Connection: Single Pin
Pin Diameter: 1.77 in.
Optional Extras: Handheld PDA



TM65

Torque Range: up to 47,944 ft-lbs
Earth Drill Range: 24000-80 - 35000-80
Unit Height: 20.0 in.
Unit Diameter: 11.4 in.
Unit Weight: 176 lbs
Hitch Connection: Single Pin
Pin Diameter: 2.36 in.
Optional Extras: Handheld PDA





Trencher Attachments

The laborious task of digging a trench has been transformed since the advent of the Trencher Attachment. Auger Torque's range of Trenchers cover depths from 2 ft. to 5 ft. and widths up to 14 in., whilst spoil is piled neatly to the side of the trench by the integral auger.

Experience how Trencher Attachments can make light work of your construction project - the days of your trenching bucket may well be over.



**WATCH
VIDEO**

Hydraulic Chain Tensioner

A new feature of the Auger Torque Trencher range is the Hydraulic Chain Tensioner. When extra chain tension is required, this innovative design feature allows for rapid adjustment of the chain with minimal tools, and minimal disruption.



3 simple steps to a tensioned Trencher chain:

- Remove protective cover
- Add grease to hydraulic tensioner
- Refit protective cover



MT Trencher Range

- Ground Heat Pump Systems
- Drainage & Irrigation
- Gas / Water Piping
- Electric Cable
- Fibre Optic Cable
- Hedge & Small Tree Planting

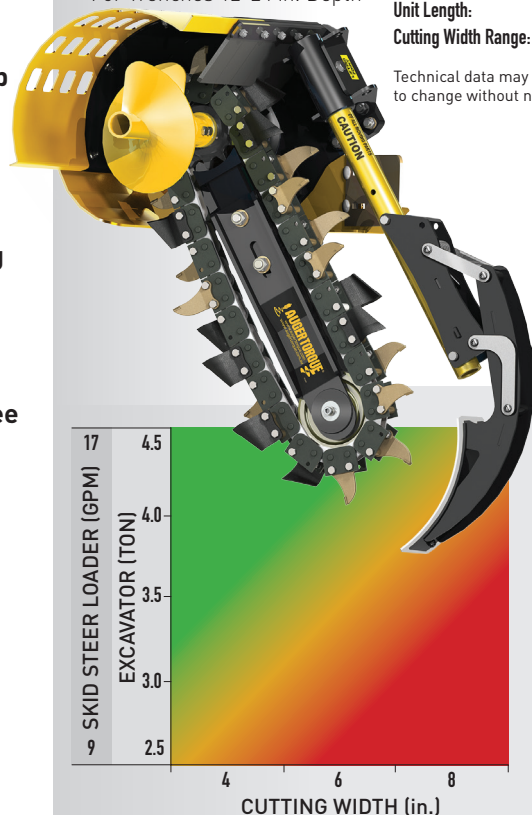
MT 24 TRENCHER

EXCAVATORS 2.5 - 4.5 TON & SKIDSTEER LOADERS

For Trenches 12-24 in. Depth

Oil Pressure Range: 2320-3000 psi
Oil Flow Range: 9-17 GPM
Unit Width: 2 ft. 9 in.
Unit Height: 2 ft. 5 in.
Unit Length: 4 ft. 10 in.
Cutting Width Range: 4-12 in.

Technical data may be subject to change without notice.



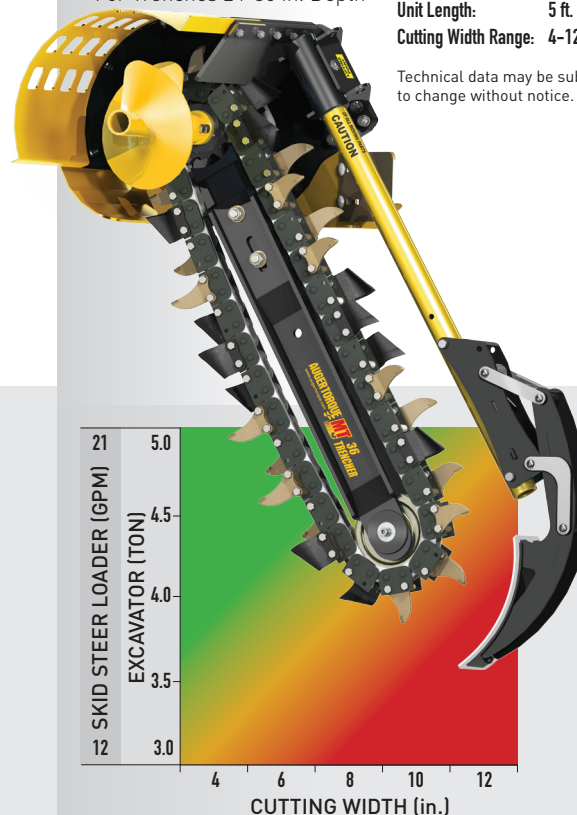
MT 36 TRENCHER

EXCAVATORS 3 - 5 TON & SKIDSTEER LOADERS

For Trenches 24-36 in. Depth

Oil Pressure Range: 2610-3481 psi
Oil Flow Range: 12-21 GPM
Unit Width: 2 ft. 9 in.
Unit Height: 2 ft. 5 in.
Unit Length: 5 ft. 10 in.
Cutting Width Range: 4-12 in.

Technical data may be subject to change without notice.



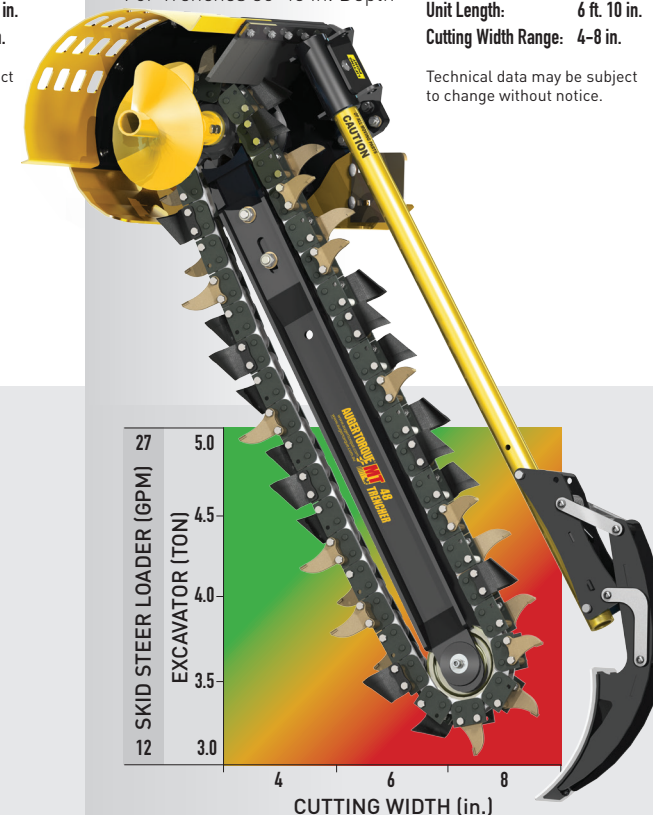
MT 48 TRENCHER

EXCAVATORS 3 - 5 TON & SKIDSTEER LOADERS

For Trenches 30-48 in. Depth

Pressure: 2610-3481 psi
Oil Flow Range: 12-27 GPM
Unit Width: 2 ft. 9 in.
Unit Height: 2 ft. 5 in.
Unit Length: 6 ft. 10 in.
Cutting Width Range: 4-8 in.

Technical data may be subject to change without notice.



■ IDEALLY SUITED ■ SUITABLE ■ NOT SUITED

EARTH WEAR PARTS



Earth Tooth
Left Hand
44-2011



Earth Tooth
Right Hand
44-2010

TUNGSTEN WEAR PARTS



Tungsten Tooth
Left Hand
44-2003



Tungsten Tooth
Centre
44-2002



Tungsten Tooth
Right Hand
44-2001

BOOM SPARE PARTS

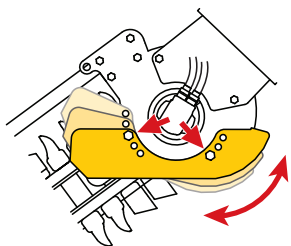


MT Sprocket
42-1033

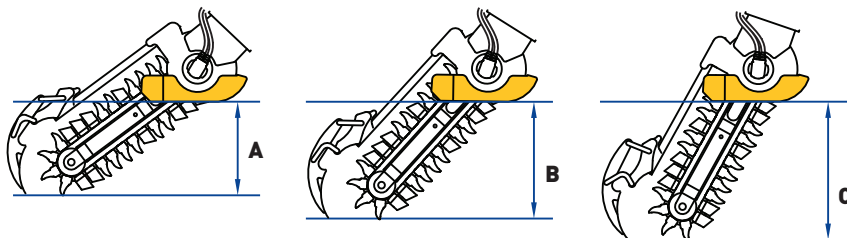


Nose Roller,
Bearing &
Circlip Kit
42-1900-KIT

TRENCH DEPTH CAPABILITY



Adjustable Depth-control Skid allows for 3 different depth settings



	DEPTH A	DEPTH B	DEPTH C
MT 24	12 in.	18 in.	24 in.
MT 36	24 in.	30 in.	36 in.
MT 48	32 in.	40 in.	48 in.

MOUNTING HITCH OPTIONS

Two versions of mounting hitches are available;

SIDE SHIFT FRAME
For Skidsteer Loaders

MINI LOADER FRAME
for Mini Loaders

EXCAVATOR HITCH
Available in several pin sizes to fit most machines.

Pin diameter options

1.187 in.	15-53000
1.375 in.	15-53500
1.625 in.	15-54000
1.75 in.	15-54500

GROUND CONDITIONS

EARTH
Best suited to soft grounds like earth and clay.

COMBINATION
Best used in dry, hard or medium ground conditions.

TUNGSTEN
Best used in dry, hard ground conditions.

CHAIN OPTIONS

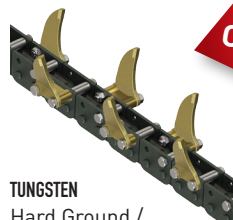
There are a choice of 3 chain options for each machine to allow for differing ground conditions. Check the chain widths available against Auger Torque charts, price lists and specifications.



EARTH
Soft Ground



COMBINATION
Mixed Terrain



TUNGSTEN
Hard Ground / Frozen

CHAIN WIDTH OPTIONS

	4 in.	6 in.	8 in.	10 in.	12 in.
MT 24 Earth	44-2901	44-2903	44-2905	44-2940	44-2936
MT 24 Combination	44-2902	44-2904	44-2906	44-2919	44-2937
MT 24 Tungsten	44-2918	44-2913	44-2914	44-2945	44-2938
MT 36 Earth	44-2907	44-2909	44-2911	44-2939	44-2933
MT 36 Combination	44-2908	44-2910	44-2912	44-2915	44-2934
MT 36 Tungsten	44-2916	44-2920	44-2921	44-2941	44-2935
MT 48 Earth	44-2924	44-2923	44-2927	-	-
MT 48 Combination	44-2925	44-2922	44-2928	-	-
MT 48 Tungsten	44-2926	44-2917	44-2929	-	-

FEATURE
TENSION
CHAIN IN UNDER
1 MINUTE



TRENCHERS FOR LOADERS & EXCAVATORS 2.5 - 5 TONS

XHD Trencher Range

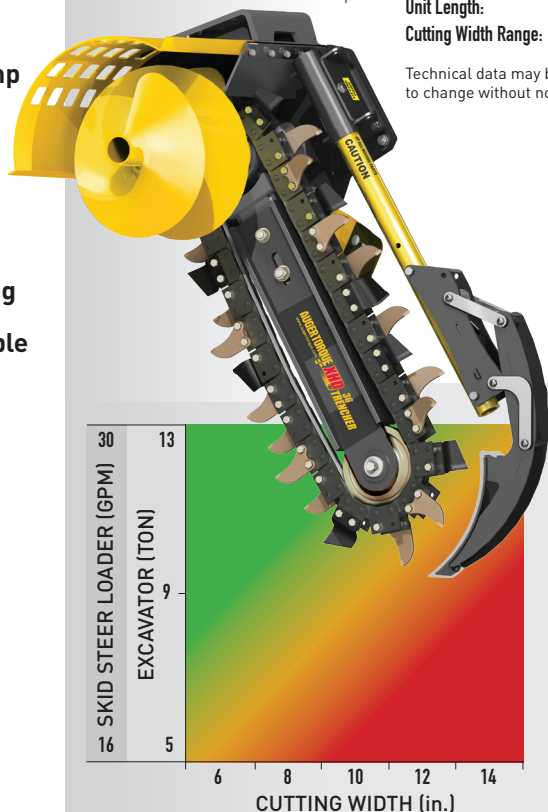
- Ground Heat Pump Systems
- Drainage & Irrigation
- Larger Bore Gas / Water Piping
- Deep Electric Cable
- Fibre Optic Cable
- Hedge & Tree Planting

XHD 36 TRENCHER

**EXCAVATORS
5 - 7.5 TON
& SKIDSTEER LOADERS**
For Trenches 24-36 in. Depth

Oil Pressure Range: 2610-3481 psi
Oil Flow Range: 16-25 GPM
Unit Width: 3 ft. 4 in.
Unit Height: 2 ft. 8 in.
Unit Length: 6 ft. 5 in.
Cutting Width Range: 6-14 in.

Technical data may be subject to change without notice.

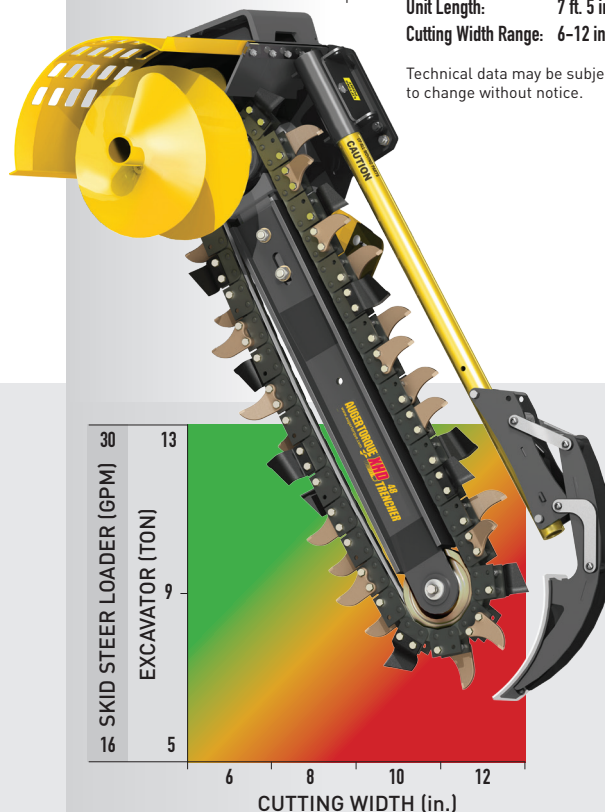


XHD 48 TRENCHER

**EXCAVATORS
5 - 7.5 TON
& SKIDSTEER LOADERS**
For Trenches 30-48 in. Depth

Oil Pressure Range: 2610-3481 psi
Oil Flow Range: 18-30 GPM
Unit Width: 3 ft. 4 in.
Unit Height: 2 ft. 8 in.
Unit Length: 7 ft. 5 in.
Cutting Width Range: 6-12 in.

Technical data may be subject to change without notice.

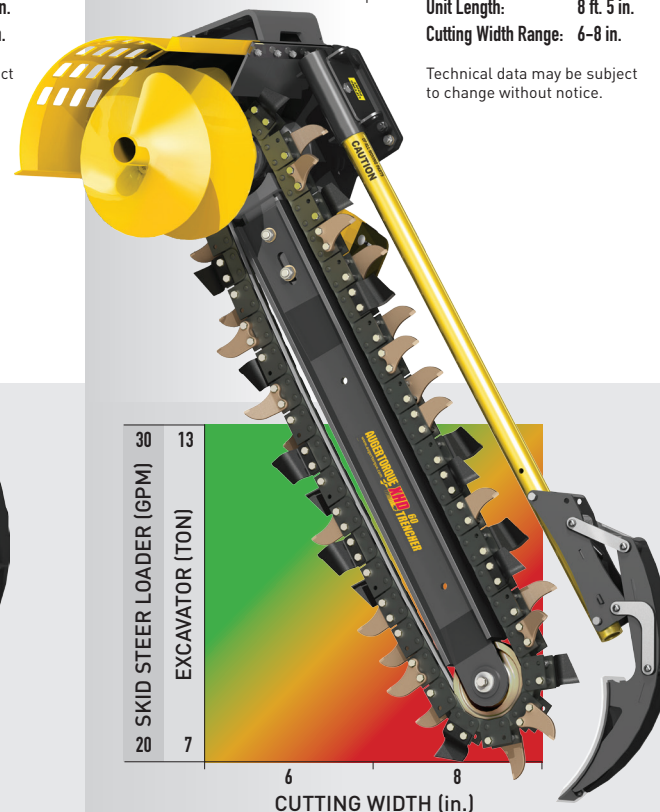


XHD 60 TRENCHER

**EXCAVATORS
5 - 10 TON
& SKIDSTEER LOADERS**
For Trenches 39-60 in. Depth

Pressure: 2610-3481 psi
Oil Flow Range: 22-35 GPM
Unit Width: 3 ft. 4 in.
Unit Height: 2 ft. 8 in.
Unit Length: 8 ft. 5 in.
Cutting Width Range: 6-8 in.

Technical data may be subject to change without notice.



■ IDEALLY SUITED ■ SUITABLE ■ NOT SUITED

EARTH WEAR PARTS



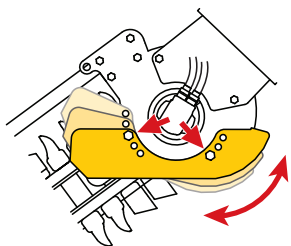
TUNGSTEN WEAR PARTS



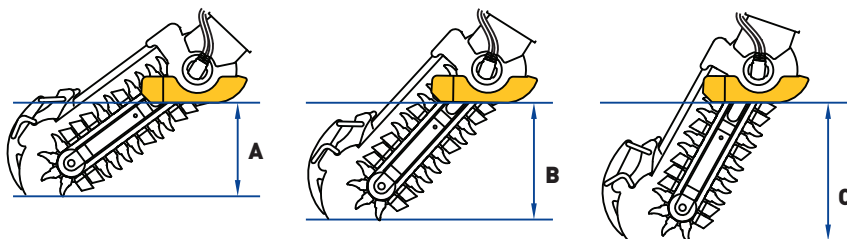
BOOM SPARE PARTS



TRENCH DEPTH CAPABILITY



Adjustable Depth-control Skid allows for 3 different depth settings



	DEPTH A	DEPTH B	DEPTH C
XHD 36	24 in.	30 in.	36 in.
XHD 48	32 in.	40 in.	48 in.
XHD 60	40 in.	50 in.	60 in.

MOUNTING HITCH OPTIONS

Two versions of mounting hitches are available;

SIDE SHIFT FRAME
For Skidsteer Loaders

MINI LOADER FRAME
for Mini Loaders

EXCAVATOR HITCH
Available in several pin sizes to fit most machines.

Pin diameter options

1.625 in.	15-64000
1.75 in.	15-64500
2 in.	15-65000
2.25 in.	15-65500
2.375 in.	15-66000
2.875 in.	15-66500

GROUND CONDITIONS

EARTH
Best suited to soft grounds like earth and clay.

COMBINATION
Best used in dry, hard or medium ground conditions.

TUNGSTEN
Best used in dry, hard ground conditions.

CHAIN OPTIONS

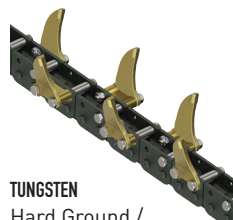
There are a choice of 3 chain options for each machine to allow for differing ground conditions. Check the chain widths available against Auger Torque charts, price lists and specifications.



EARTH
Soft Ground



COMBINATION
Mixed Terrain



TUNGSTEN
Hard Ground / Frozen

CHAIN WIDTH OPTIONS

	6 in.	8 in.	10 in.	12 in.	14 in.
XHD 36 Earth	44-3904	44-3907	44-3910	44-3913	44-3916
XHD 36 Combination	44-3905	44-3908	44-3911	44-3914	44-3917
XHD 36 Tungsten	44-3906	44-3909	44-3912	44-3915	44-3918
XHD 48 Earth	44-3922	44-3925	44-3928	44-3931	-
XHD 48 Combination	44-3923	44-3926	44-3929	44-3932	-
XHD 48 Tungsten	44-3924	44-3927	44-3930	44-3933	-
XHD 60 Earth	44-3937	44-3940	-	-	-
XHD 60 Combination	44-3938	44-3941	-	-	-
XHD 60 Tungsten	44-3939	44-3942	-	-	-



FEATURE
TENSION
CHAIN IN UNDER
1 MINUTE

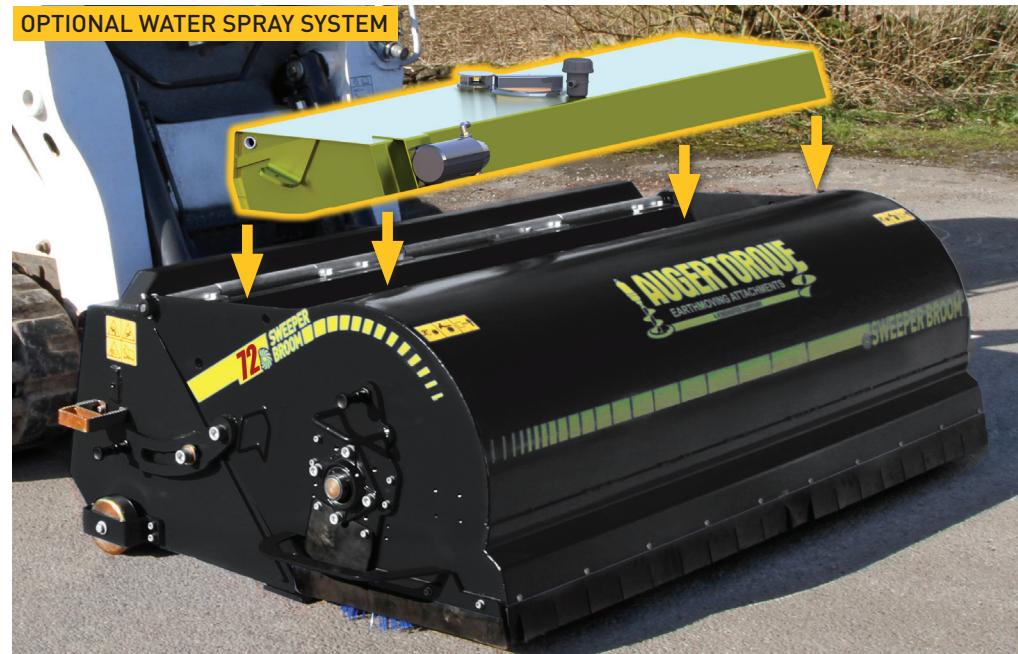
Sweeper Broom

Auger Torque brooms are precision engineered from high grade steel. Easy adjustment, simple brush replacement, high quality hydraulic motors and low maintenance design are just a few of the features. With the optional high capacity, low profile water spray system for keeping airborne dust to a minimum, our brooms really do stand out from the rest.

Available in a number of variations and sizes for Skid Steer Loaders, Front End Loaders, and Telehandlers means that we will be able to help you out with the right broom for most applications. Call your nearest Auger Torque office for more information.

FEATURES

- 1800mm sweep width
- Forward and reverse motion
- Modular motor fits to left or right side to match hydraulic connections
- Lockable bucket cover for convenient brush access
- Lightweight aluminium brush assembly - Easy brush replacement
- Simple brush depth adjustment
- Reversible bolt on cutting edge
- Easy-change rubber dust suppression skirts
- Water spray system (optional)
- Steel guide wheels
- Low profile design for enhanced operator visibility
- Low maintenance design



SWEEPER 72

Oil Pressure Range: 3481 psi max
Oil Flow Range: 17-30 gpm
Hose Ports: 1/2" BSP
Sweep Width: 72 in.
Brush Diameter: 24 in.
Unit Width: 85.95 in.
Unit Height: 24.68 in.
Unit Depth: 52.72 in.
Unit Weight: 1036 lbs

Optional Extras: Water Spray System



Hedge Trimmer

We are pleased to announce a new addition to our ever increasing line of high quality attachments. The Auger Torque T150 Hedge Trimmer is now available to order.

The Auger Torque Hedge Trimmers are the perfect addition for excavators from 1.5 Ton - 8 Ton and Skidsteer loaders. The newly designed mounting frame allows you to quickly switch the Hedge Trimmer between the left and right hand side of the parent machine. When fitted to a Skid Steer, it can also be used to cut grass and brush. Attaching the optional tooth extension provides a full 8.2 ft. cutting length. This is sure to make trimming more precise, efficient and will provide yet another way to expand the versatility of existing machines.

40 in. Extension
Extends cutting length to 8.2 ft.



T150

Suitable For: 1.5 Ton - 8 Ton Excavators
Skid Steer Loaders
Cutting Length: 8 ft.
Max. Cutting Dia: 1.5 in.
Unit Width: 60.5 in.
Unit Height: 11.5 in.
Unit Depth: 14 in.
Unit Weight: 152 lbs
Hitch Options: Double Pin Hitch
Skid Steer Frame
Hoses Included: Yes

EXTENSION

Cutting Length: 40 in.
Unit Width: 41.6 in.
Unit Height: 4.7 in.
Unit Depth: 8.5 in.
Unit Weight: 57.3 lbs

FEATURES

- Suits 1.5 to 8 Ton excavators and Skid Steer Loaders
- 5 ft. cutting length
- 40 in. cutting extension (optional)
- Quickly switch between left and right side cutting
- Cut branches up to 1.5 in. diameter
- Replaceable cutting teeth
- Neat and accurate cut
- High performance
- Extreme durability
- Low maintenance
- Hoses included
- Delivered ready to use



Skid Steer Loader Pallet Forks

Ideal for site locations where pallet handling is needed but the site is unmade or too rough for a fork lift truck.

FEATURES

- Large range of tyne options available up to 2 Tons
- Fully adjustable tynes with locking pins
- Tynes are fixed at the top and heel preventing bouncing while carrying loads
- High visibility brick guard giving you good vision whilst loading and unloading - crucial in a safety conscious age
- Side step for easy entry and exit of the cab
- Can be disassembled and packed into a compact storage space when not in use



PALLET PF3300 FORKS

Weight Capacity: 3300 lbs
Tine Height: 22 in.
Tine Width: 3.25 in.
Tine Length: 42 in.
Tine Thickness: 1.57 in.

MEDIUM CAPACITY PALLET FORKS

Assembled Height: 37 in.
Assembled Width: 47 in.
Assembled Length: 53 in.
Kit Weight: 388 lbs

Technical data may be subject to change without notice.

PALLET PF4000 FORKS

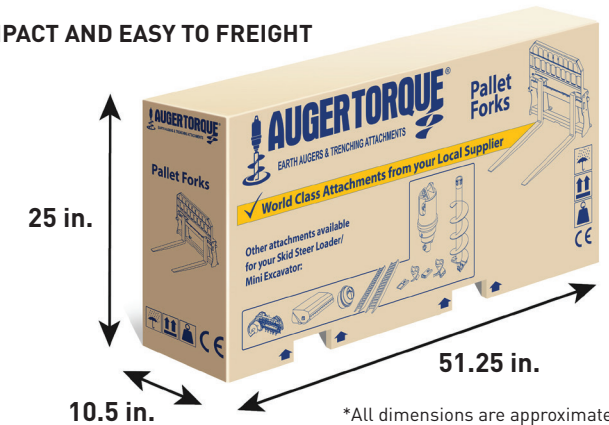
Weight Capacity: 4000 lbs
Tine Height: 22 in.
Tine Width: 4 in.
Tine Length: 48 in.
Tine Thickness: 1.57 in.

HIGH CAPACITY PALLET FORKS

Assembled Height: 37 in.
Assembled Width: 47 in.
Assembled Length: 59 in.
Kit Weight: 432 lbs

Technical data may be subject to change without notice.

COMPACT AND EASY TO FREIGHT

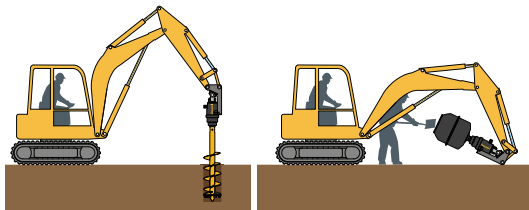


*All dimensions are approximate

Mixer Bowls

Available in 37 and 48 gallon sizes, the Auger Torque Mixer Bowl attaches quickly and easily to our Earth Drills.

Mixing in inaccessible areas where stand alone machines are not practical has never been easier. Skidsteer and Excavator mount brackets are available and a Mixer Bowl is the perfect addition to our Mini Loader Earth Drill range.



Ideal for fencing contractors, with the aid of the Mixer Cradle Hitch the Auger can be quickly removed and the Mixer Bowl attached and locked in place with the standard Auger Pin. After the concrete has been laid the Auger can be replaced for the next post.

When used on Skidsteer machines the mixer bowl requires the use of a mixer cradle that is mounted easily to any of our skid steer loader frames.



MIXER CM 37 BOWL

**EXCAVATORS
1 - 3 TONS, MINI LOAD-
ERS & SMALLER SKID
STEERS**

Machine Compatibility: X1100-13 - 2200-20
Bowl Capacity: 37 Gallons
Unit Depth: 24 in.
Unit Diameter: 27 in.
Unit Weight: 62 lbs

Technical data may be subject
to change without notice.

MIXER CM 48 BOWL

**EXCAVATORS
3 - 7 TONS
& LARGER SKID STEERS**

Machine Compatibility: 2200-20 - 5200-35
Bowl Capacity: 48 Gallons
Unit Depth: 28 in.
Unit Diameter: 28 in.
Unit Weight: 73 lbs

Technical data may be subject
to change without notice.

Stump Planers

Removal of tree stumps is a job which, at best, is noisy, messy and time consuming. Traditional methods of removal shower chippings over a wide area making clean up a time-consuming exercise.

With the Auger Torque Stump Planer, tree stumps are removed effortlessly and quietly and clean up time is reduced significantly.

The Auger Torque Stump Planer is the quick and easy attachment to any Earth Drill for the effective, clean removal of tree stumps of any size.

If you need to clear ground in preparation of works or earth drilling there is no better way to remove the remains of trees. Stump Planers are available in numerous sizes with a range of different hub options for different demands.

Quick and easy with minimal mess compared to traditional stump grinding makes this a must-have product for those working in ground preparation and woodland maintenance.



Tungsten Carbide blades



Tungsten Carbide pilot



Stability bars



STUMP SP 10 PLANER

EXCAVATORS 1 - 5 TONS & SKIDSTEERS

Earth Drill Compatibility: X2100-17 - 3300-30
Diameter: 10 in.
Length: 25 in.
Hub Options: 2 in. Hex & 2.56 in. Round
Unit Weight: 55 lbs

Technical data may be subject
to change without notice.



The unique pilot engages with the top surface of the tree stump drawing the tool down allowing the blades to engage with a clean horizontal cut.

STUMP SP 14 PLANER

EXCAVATORS 4.5 - 8 TONS & HIGH FLOW SKIDSTEERS

Earth Drill Compatibility: 3700-30 - 6000-40
Diameter: 14 in.
Length: 27 in.
Hub Options: 2.5 in. Hex & 2.96 in. Square
Unit Weight: 73 lbs

Technical data may be subject
to change without notice.



As the blades rotate they shave the wood into a tidy pile and pull the planer down further.

STUMP SP 18 PLANER

EXCAVATORS 6 - 15 TONS & SKIDSTEERS

Earth Drill Compatibility: 6000-40 - 11000-45
Diameter: 18 in.
Length: 34 in.
Hub Options: 2.5 in. Hex & 2.96 in. Square
Unit Weight: 115 lbs

Technical data may be subject
to change without notice.



When the planer has achieved a deep cut, reposition to overlap the first hole and repeat the process until all of the stump is removed.



Stump removal is now a clean and quiet operation which can be performed quickly and efficiently by a single operator.

Notes

.....

.....

.....

.....

.....

.....

.....

.....

.....

.....

.....

.....

.....

.....

.....

Notes

.....

.....

.....

.....

.....

.....

.....

.....

.....

.....

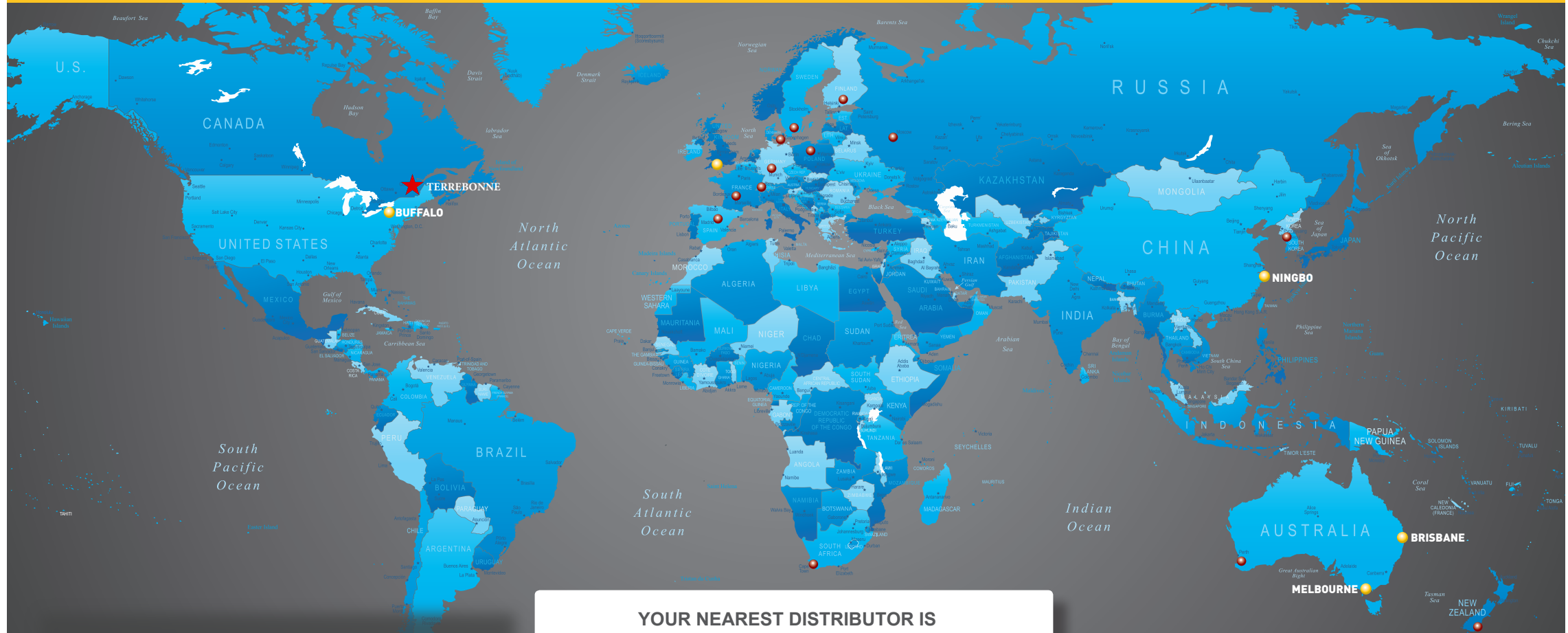
.....

.....

.....

.....

.....



North America Region

Kinshofer USA Sanborn - New York - USA

YOUR NEAREST DISTRIBUTOR IS